

Macchine estrusione soffiaggio elettriche • Corsa 500÷900 mm
Electric extrusion blow moulding machines • Stroke 500÷900 mm
Maquinás de extrusión soplado electricas • Carrera 500÷900 mm
Machines d'extrusion soufflage electriques • Course 500÷900 mm



ITALIAN TECHNOLOGY



| | | |
|---|-----------|------------|
| FORZA DI CHIUSURA MOULD CLAMPING FORCE FUERZA DE CIERRE FORCE DE FERMETURE | KN | 220 |
|---|-----------|------------|

Carro singolo / Single station /
Estación simple / Chariot simple

Carro doppio / Double station /
Estación doble / Chariot double

| | PB22ES-500 | PB22ES-800 | PB22ES-900 | PB22ED-500 | PB22ED-800 | PB22ED-900 |
|--|------------|------------|------------|------------|------------|------------|
|--|------------|------------|------------|------------|------------|------------|

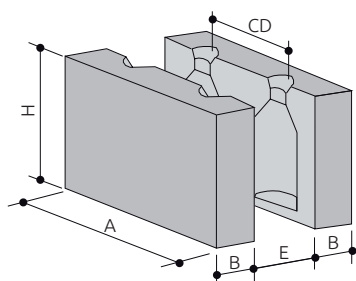
DATI GENERALI / GENERAL DATA / DATOS GENERALES / DONNÉES GÉNÉRALES

| | | | | | | | |
|--|----|-----|-----|-----|-----|-----|-----|
| Stampi / Moulds / Moldes / Moules | n° | 1 | 1 | 1 | 2 | 2 | 2 |
| Corsa / Stroke / Carrera / Course | mm | 500 | 800 | 900 | 500 | 800 | 900 |
| Ciclo a vuoto / Dry cycle time / Ciclo en vacío / Cadence à vide | s | 3 | 3,6 | 3,6 | 3 | 3,6 | 3,6 |
| Potenza motore chiusura / Motor clamping power / Potencia motor de cierre / Puissance moteur de fermeture | kW | 6,8 | | | 6,8 | | |

CONSUMI / CONSUMPTIONS / CONSUMOS / CONSOMMATIONS

| | | | | | | | |
|---|--------|--------|--|--|--------|--|--|
| Pressione aria / Air pressure / Presión aire / Pression air | bar | 8 ÷ 10 | | | 8 ÷ 10 | | |
| Consumo aria / Air consumption / Consumo aire / Consommation air | Nl/min | 2000 | | | 4000 | | |
| Pressione acqua / Cooling water pressure / Presión agua / Pression eau | bar | 3 ÷ 5 | | | 3 ÷ 5 | | |
| Raffreddamento stampi HDPE / Mould cooling HDPE / Enfriamiento moldes HDPE / Refroidissement moules HDPE | KJ/Kg | 650 | | | 650 | | |

STAMPO / MOULD / MOLDE / MOULE



KG
Kg. 350

| | PB22ES-500 | PB22ES-800 | PB22ES-900 | PB22ED-500 | PB22ED-800 | PB22ED-900 |
|------|------------|------------|------------|------------|------------|------------|
| A mm | 490 | 790 | 890 | 490 | 790 | 890 |
| H mm | 420 | | | 420 | | |
| B mm | 130÷135 | | | 130÷135 | | |
| E mm | 270 | | | 270 | | |

CD INTERASSE USCITE / CENTER DISTANCE / DISTANCIA ENTRE CENTROS / ENTRAXE FILIÈRES

| N. Cav | 2 | 3 | 4 | 5 | 6 | 7 | 8 | 9 | 10 | 11 | 12 |
|---------|-----|-----|-----|-----|-----|-----|-----|----|----|----|----|
| C = 500 | 210 | 140 | 100 | 85 | 70 | 60 | 50 | - | - | - | - |
| C = 800 | 360 | 240 | 180 | 140 | 120 | 100 | 90 | 80 | 70 | 65 | 60 |
| C = 900 | 410 | 270 | 200 | 160 | 135 | 110 | 100 | 90 | 80 | 75 | 65 |

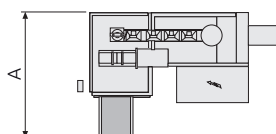
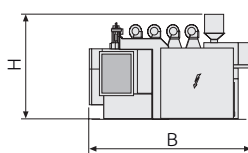
C = Corsa / Stroke / Carrera / Course

ESTRUSORE / EXTRUDER / EXTRUSORA / EXTRUDEUSE

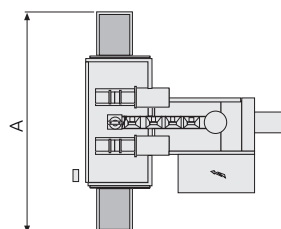
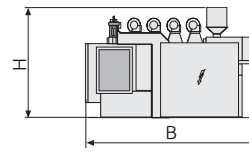
| | E70/25 | E80/25 | E90/25 | E100/28 | E120/28 | E135/28 | |
|---|--------|--------|--------|---------|---------|---------|-----|
| Diametro vite / Screw diameter / Diámetro husillo / Diamètre vis | mm | 70 | 80 | 90 | 100 | 120 | 135 |
| Lunghezza vite / Screw length / Largo husillo / Longueur vis | L/D | 25 | 25 | 25 | 28 | 28 | 28 |
| Potenza motore / Motor power / Potencia motor / Puissance moteur | kW | 37 | 44 | 55 | 113 | 120 | 120 |
| Plastificazione HDPE / HDPE plasticizing / Plastificación HDPE / Plastification HDPE | kg/h | 110 | 150 | 190 | 300 | 400 | 500 |

DIMENSIONI E PESO / DIMENSIONS AND WEIGHT / DIMENSIONES Y PESO / DIMENSIONS ET POIDS

| | Carro singolo / Single station / Estación simple / Chariot simple | Carro doppio / Double station / Estación doble / Chariot double |
|---------|--|--|
| | A x B x H | A x B x H |
| C = 500 | 5000 x 6100 x 4100 14000 kg | 4600 x 6620 x 4100 21000 kg |
| C = 800 | 5300 x 6800 x 4100 14000 kg | 7000 x 7700 x 4100 21000 kg |
| C = 900 | 5300 x 6800 x 4100 14000 kg | 7000 x 7700 x 4100 21000 kg |



Carro singolo / Single station / Estación simple / Chariot simple



Carro doppio / Double station / Estación doble / Chariot double