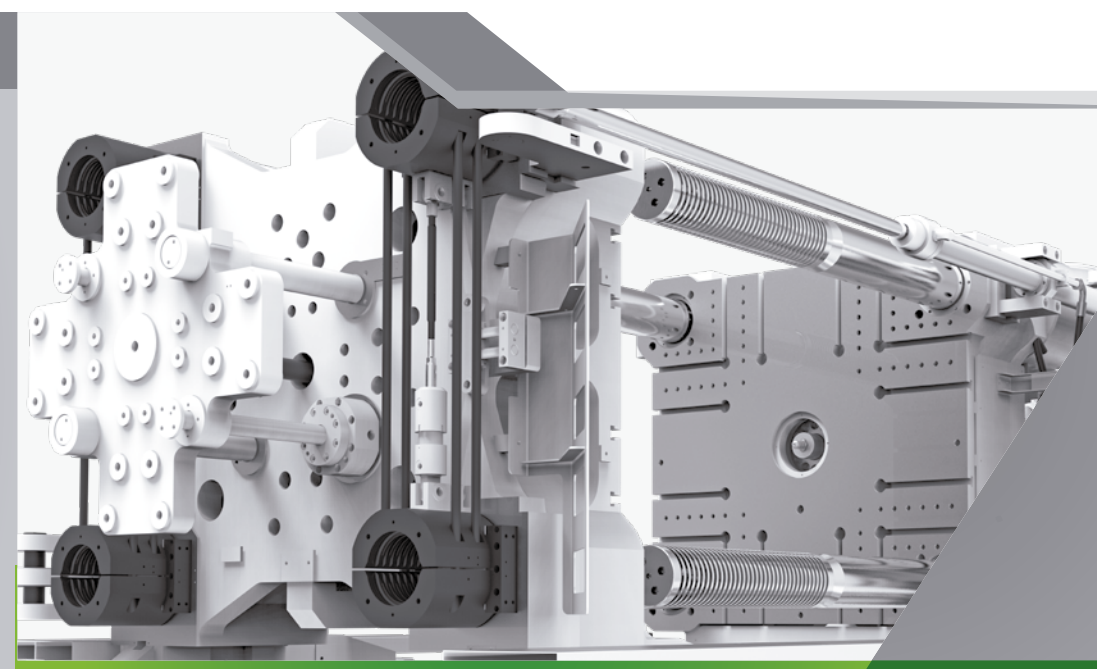


HAITIAN PLASTICS MACHINERY GROUP CO., LTD
 No. 1688 Haitian Road, Xiaogang, Beilun, Ningbo, P. R. China.
 + 86-574-8617 7005 (China)
 + 86-574-8617 7242 (International)
 haitian@mail.haitian.com
 www.haitianpm.com

NINGBO HAITIAN HUAYUAN MACHINERY CO.,LTD.
 No.1, Nanhuan Road, Export Processing Zone, Beilun, Ningbo, Zhejiang, 315806 P.R. China
 +86-574-8617 7242
 +86-574-8622 1864
 haitian@mail.haitian.com
 www.haitianpm.com



SPECIFICATIONS

GLOBAL



HAITIAN JUPITER III SERIES

Servo hydraulic two-platen solution

12,000 - 66,000 kN

JU 20201111-IV



Combination Possibilities

12,000 - 66,000 kN

MACHINE TYPE	CLAMPING UNIT		INJECTION UNIT															
	1730	2230	3430	4630	5330	6730	8930	11300	17300	22300	32300	40300	50300	62300	93300	106300	518000	
JU4500III																		
JU5500III																		
JU6500III																		
JU7500III																		
JU9000III																		
JU10800III																		
JU12000III																		
JU13000III																		
JU14000III																		
JU16000III																		
JU18500III																		
JU21000III																		
JU24000III																		
JU28000III																		
JU33000III																		
JU40000III																		
JU55000III																		
JU66000III																		

Standard range
 Combination possibilities

SPECIFICATION JU12000III

SPECIFICATIONS
INJECTION UNIT

		5330				6730				JU12000III 8930				11300						
CLAMPING UNIT																		CLAMPING UNIT		
Clamping force	kN																	12000	kN	Clamping force
Dist. between tie bars (HxV)	mm																	1300x1200	mm	Dist. between tie bars (HxV)
Mold height max	mm																	1250	mm	Mold height max
Mold height min	mm																	600	mm	Mold height min
Ejector stroke	mm																	350	mm	Ejector stroke
Ejector force	kN																	230	kN	Ejector force
Max. daylight	mm																	2650	mm	Max. daylight
Mold opening stroke ①	mm																	2050/1400	mm	Mold opening stroke ①
Max. mold weight ②	t																	20	t	Max. mold weight ②
INJECTION UNIT		A	B	C	D	A	B	C	D	A	B	C	D	A	B	C	D	INJECTION UNIT		
Screw diameter	mm	80	90	100	110	90	100	110	120	100	110	120	130	110	120	130	140	mm	Screw diameter	
Screw L /D ratio	L/D	24.8	22	19.8	18	24.4	22	20	18.3	24.2	22	20.2	18.6	26.2	24	22.2	20.6	L/D	Screw L /D ratio	
Injection volume (theoretical)	cm ³	2262	2863	3534	4276	2990	3691	4467	5316	4006	4847	5768	6769	5227	6220	7300	8467	cm ³	Injection volume (theoretical)	
Injection weight (PS)	g	2058	2605	3216	3892	2721	3359	4065	4837	3645	4410	5249	6160	4756	5661	6643	7705	g	Injection weight (PS)	
Injection rate	g/s	608	770	951	1150	642	793	960	1142	762	922	1097	1288	924	1100	1291	1497	g/s	Injection rate	
Injection pressure	MPa	204	161	131	108	193	157	129	109	196	162	136	116	190	159	136	117	MPa	Injection pressure	
Injection pressure (max)	MPa	236	187	151	125	222	180	149	125	223	184	155	132	218	183	156	135	MPa	Injection pressure (max)	
Plasticizing rate (GPPS) ③	g/s	80.6	101	125	146	89.5	110	130	152	101	121	140	161	123	142	164	187	g/s	Plasticizing rate (GPPS) ③	
Plasticizing rate (HDPE) ④	g/s	119	151	186	219	132	162	193	224	147	177	201	231	187	217	240	273	g/s	Plasticizing rate (HDPE) ④	
Screw speed	rpm	165				135				116				105				rpm	Screw speed	
OTHERS																		OTHERS		
Pump motor power	kW	85				85				112				130				kW	Pump motor power	
Heating power	kW	54				71				83				104				kW	Heating power	
Machine dimension (L x W x H)	m	9.69x3.37x2.89				9.80x3.37x2.90				10.14x3.37x3.63				10.93x3.37x4.24				m	Machine dimension (L x W x H)	
Machine weight	t	49				51				52				56				t	Machine weight	
Hopper capacity	kg	100				100				200				400				kg	Hopper capacity	
Oil tank ⑤	l	730				780				960				1250				l	Oil tank	

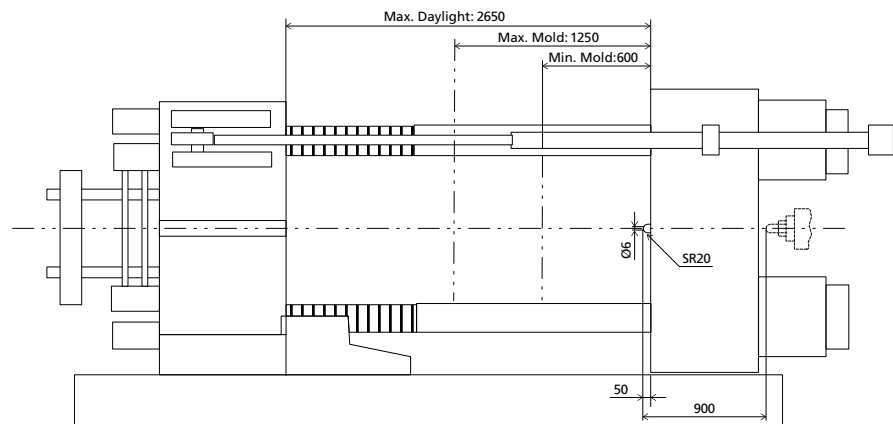
NOTE:

- ① with min. mold height / with max. mold height.
- ② moving platen: 2/3 of max. mold weight.
- ③ Plasticizing capacity (GPPS): GB standard, with application of GPPS plasticizing capacity of 3-zone screws.
- ④ Plasticizing capacity (HDPE): Euromap 19, with application of HDPE plasticizing capacity of barrier screws
The above plasticizing capacity is for reference only.
- ⑤ The oil tank volume refers to the volume of the oil tank itself, excluding the volume in cylinder and pipeline. In this sense, the customer is advised to prepare the hydraulic oil according to 1.35 times of the oil tank volume.

We reserve the right to make changes as a result of further technical advantages.

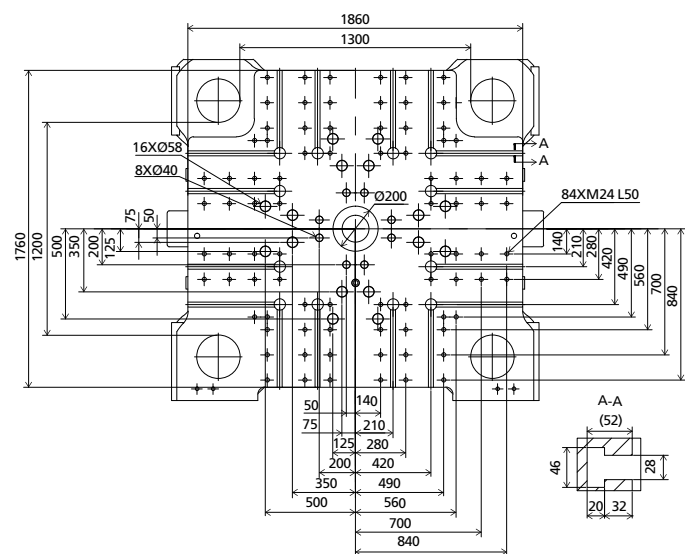
DIMENSIONS JU12000III

Clamping Unit



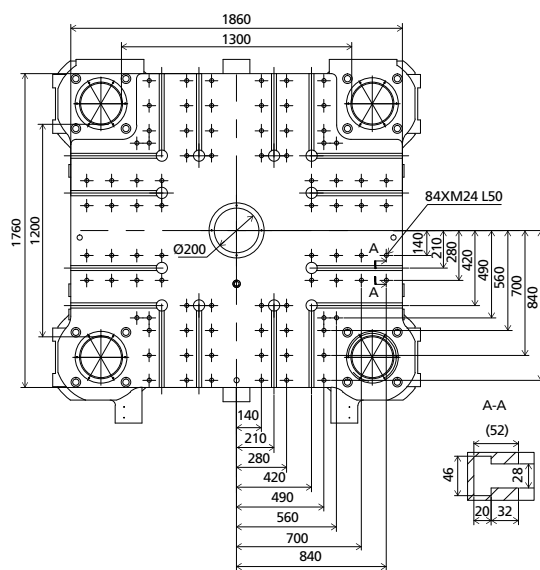
Platen dimensions

Moving platen



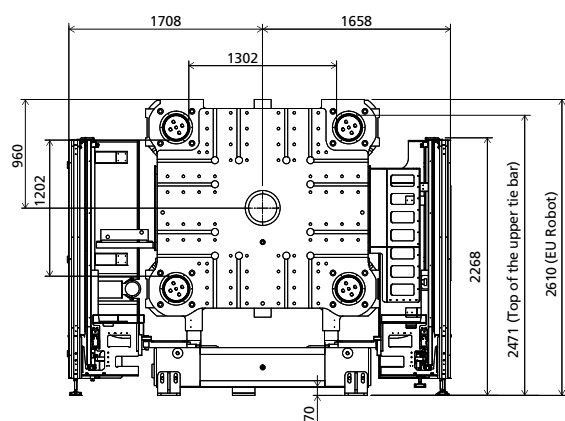
Platen dimensions

Fixed platen



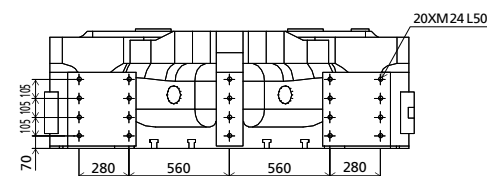
Robot

Mechanical interface

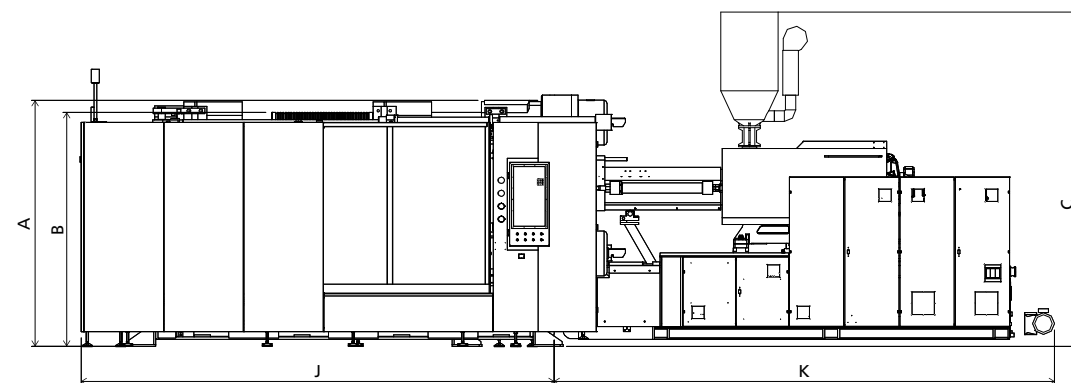


Robot

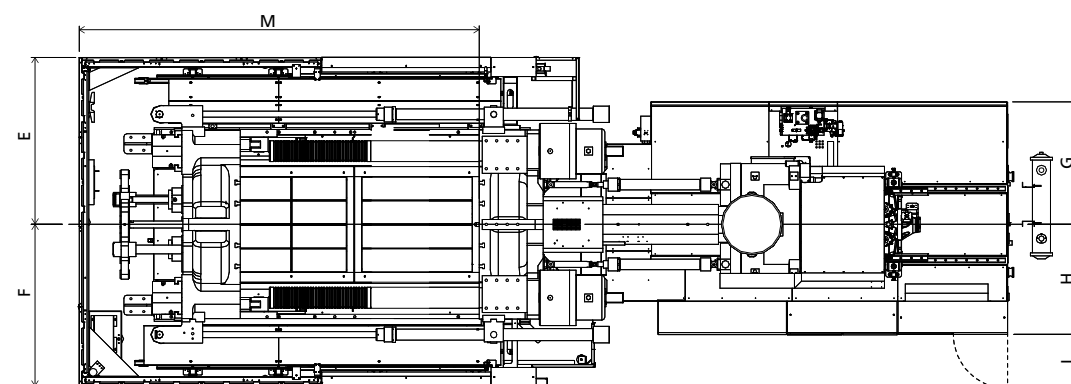
Top view fixed platen



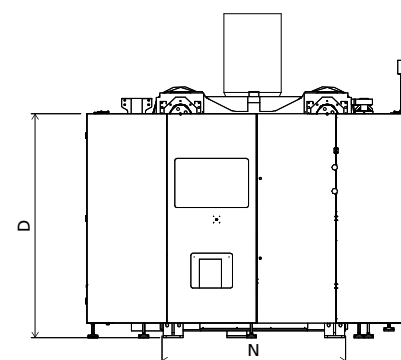
Front view



Top view



Side view



■ Standard

	A	B	C	D	E	F	G	H	I	J	K	M	N
5330	2610	2471	2885	2250	1708	1658	1203	1027	544	5102	4586	4307	1870
6730	2610	2471	2900	2250	1708	1658	1198	1042	544	5102	4689	4307	1870
8930	2610	2471	2910	2250	1708	1658	1228	1102	544	5102	4913	4307	1870
11300	2610	2471	4240	2250	1708	1658	1318	1212	544	5102	5821	4307	1870

INJECTION UNIT
DIMENSIONS (mm)

We reserve the right to make changes as a result of further technical advantages.

SPECIFICATION JU13000III

SPECIFICATIONS
INJECTION UNIT

	6730	8930	JU13000III				17300										
					11300												
CLAMPING UNIT																	
Clamping force	kN					13000				kN							
Dist. between tie bars (H×V)	mm					1420×1170				mm							
Mold height max	mm					1350				mm							
Mold height min	mm					600				mm							
Ejector stroke	mm					350				mm							
Ejector force	kN					230				kN							
Max. daylight	mm					2850				mm							
Mold opening stroke ①	mm					2250/1500				mm							
Max. mold weight ②	t					23				t							
INJECTION UNIT																	
		A	B	C	D	A	B	C	D	A	B	C	D				
Screw diameter	mm	90	100	110	120	100	110	120	130	110	120	130	140	130	140	150	
Screw L /D ratio	L/D	24.4	22	20	18.3	24.2	22	20.2	18.6	26.2	24	22.2	20.6	24	22.3	20.8	
Injection volume (theoretical)	cm ³	2990	3691	4467	5316	4006	4847	5768	6769	5227	6220	7300	8467	8362	9698	11133	
Injection weight (PS)	g	2721	3359	4065	4837	3645	4410	5249	6160	4756	5661	6643	7705	7610	8825	10131	
Injection rate	g/s	774	955	1156	1376	762	922	1097	1288	924	1100	1291	1497	1236	1433	1646	
Injection pressure	MPa	193	157	129	109	196	162	136	116	190	159	136	117	186	160	140	
Injection pressure (max)	MPa	222	180	149	125	223	184	155	132	218	183	156	135	211	182	158	
Plasticizing rate (GPPS) ③	g/s	99.4	122	144	169	101	121	140	161	123	142	164	187	168	192	220	
Plasticizing rate (HDPE) ④	g/s	147	180	214	250	147	177	201	231	187	217	240	273	252	283	336	
Screw speed	rpm	150				116				105				102			
OTHERS																	
Pump motor power	kW	112				112				130				167			
Heating power	kW	71				83				104				116			
Machine dimension (L x W x H)	m	10.10×3.53×3.00				10.43×3.53×3.73				11.23×3.53×4.34				11.53×3.53×4.62			
Machine weight	t	56				57				60				65			
Hopper capacity	kg	100				200				400				400			
Oil tank ⑤	l	780				960				1250				1550			

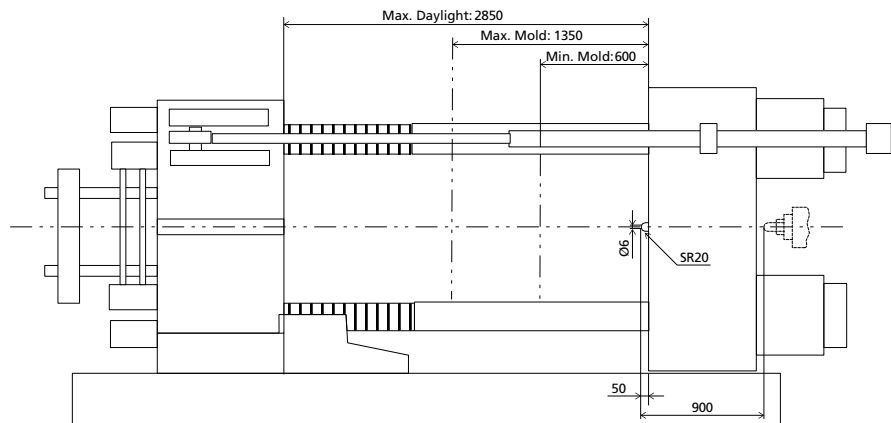
NOTE:

- ① with min. mold height / with max. mold height.
- ② moving platen: 2/3 of max. mold weight.
- ③ Plasticizing capacity (GPPS): GB standard, with application of GPPS plasticizing capacity of 3-zone screws.
- ④ Plasticizing capacity (HDPE): Euromap 19, with application of HDPE plasticizing capacity of barrier screws
The above plasticizing capacity is for reference only.
- ⑤ The oil tank volume refers to the volume of the oil tank itself, excluding the volume in cylinder and pipeline. In this sense, the customer is advised to prepare the hydraulic oil according to 1.35 times of the oil tank volume.

We reserve the right to make changes as a result of further technical advantages.

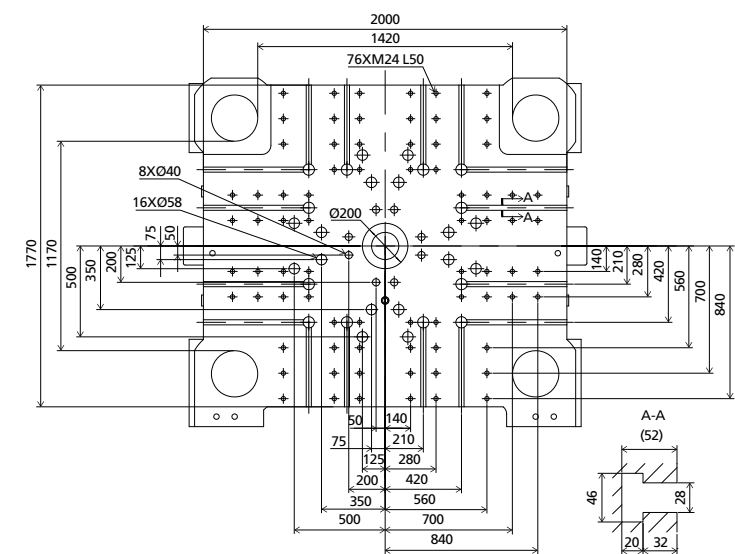
DIMENSIONS JU13000III

Clamping Unit



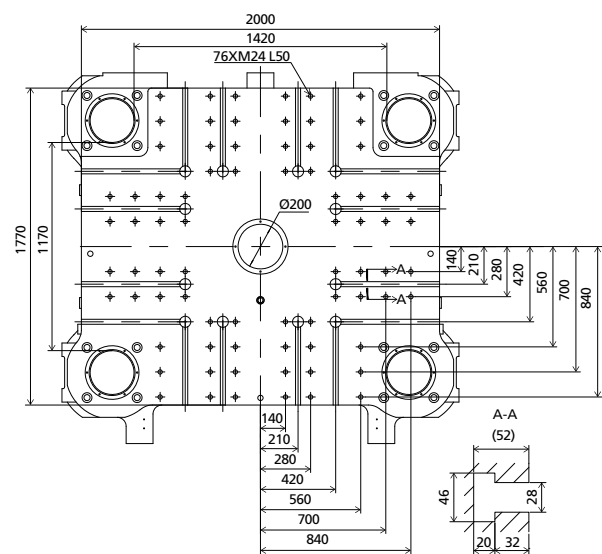
Platen dimensions

Moving platen



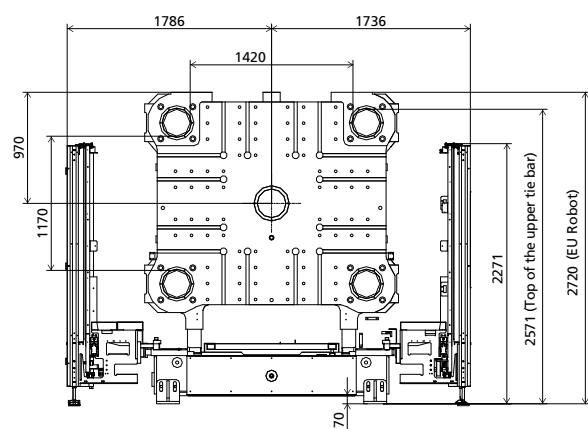
Platen dimensions

Fixed platen



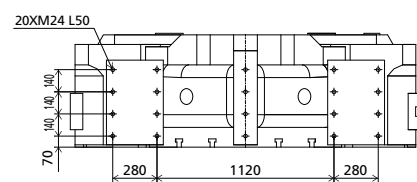
Robot

Mechanical interface

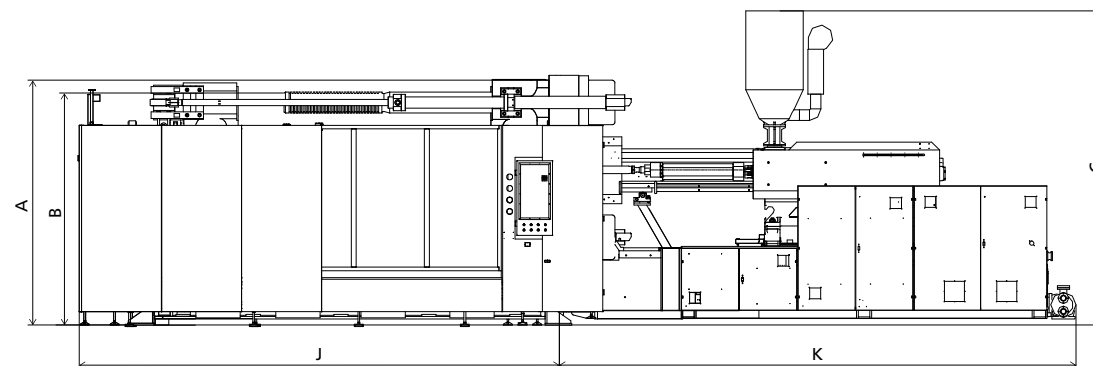


Robot

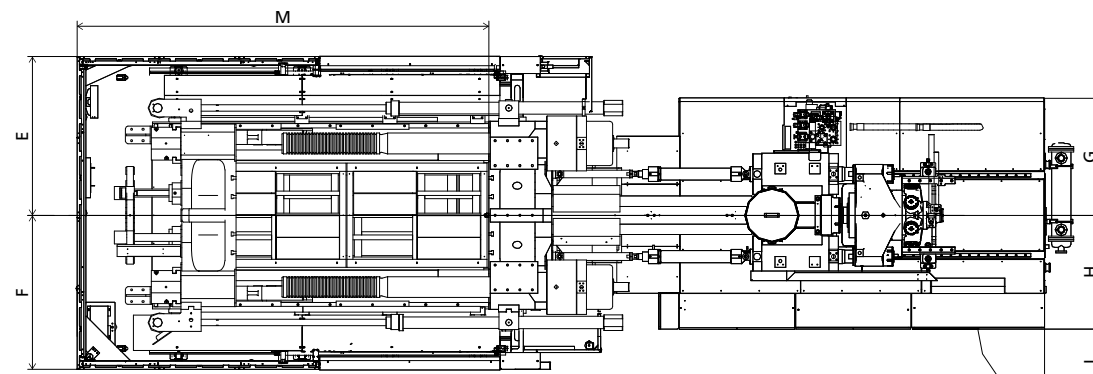
Top view fixed platen



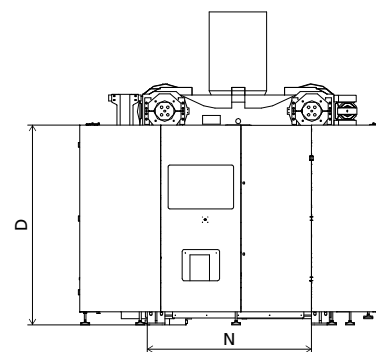
Front view



Top view



Side view



■ Standard

	A	B	C	D	E	F	G	H	I	J	K	M	N
6730	2720	2571	3000	2250	1786	1736	1198	1112	544	5409	4689	4639	2050
8930	2720	2571	3725	2250	1786	1736	1228	1172	544	5409	5021	4639	2050
11300	2720	2571	4340	2250	1786	1736	1318	1282	745	5409	5821	4639	2050
17300	2720	2571	4620	2250	1786	1736	1855	1305	850	5409	6114	4639	2050

INJECTION UNIT
DIMENSIONS (mm)

We reserve the right to make changes as a result of further technical advantages.

SPECIFICATION JU14000III

SPECIFICATIONS
INJECTION UNIT

	6730	8930	JU14000III				17300										
			11300														
CLAMPING UNIT																	
Clamping force	kN		14000				kN										
Dist. between tie bars (H×V)	mm		1460×1360				mm										
Mold height max	mm		1450				mm										
Mold height min	mm		700				mm										
Ejector stroke	mm		400				mm										
Ejector force	kN		330				kN										
Max. daylight	mm		3050				mm										
Mold opening stroke ①	mm		2350/1600				mm										
Max. mold weight ②	t		27				t										
INJECTION UNIT																	
		A	B	C	D	A	B	C	D								
Screw diameter	mm	90	100	110	120	100	110	120	130	110	120	130	140	130	140	150	mm
Screw L /D ratio	L/D	24.4	22	20	18.3	24.2	22	20.2	18.6	26.2	24	22.2	20.6	24	22.3	20.8	L/D
Injection volume (theoretical)	cm ³	2990	3691	4467	5316	4006	4847	5768	6769	5227	6220	7300	8467	8362	9698	11133	cm ³
Injection weight (PS)	g	2721	3359	4065	4837	3645	4410	5249	6160	4756	5661	6643	7705	7610	8825	10131	g
Injection rate	g/s	774	955	1156	1376	762	922	1097	1288	924	1100	1291	1497	1236	1433	1646	g/s
Injection pressure	MPa	193	157	129	109	196	162	136	116	190	159	136	117	186	160	140	MPa
Injection pressure (max)	MPa	222	180	149	125	223	184	155	132	218	183	156	135	211	182	158	MPa
Plasticizing rate (GPPS) ③	g/s	99.4	122	144	169	101	121	140	161	123	142	164	187	168	192	220	g/s
Plasticizing rate (HDPE) ④	g/s	147	180	214	250	147	177	201	231	187	217	240	273	252	283	336	g/s
Screw speed	rpm		150				116				105				102		rpm
OTHERS																	
Pump motor power	kW		112				112				130				167		kW
Heating power	kW		71				83				104				116		kW
Machine dimension (L x W x H)	m		10.61×3.60×3.08				10.93×3.60×3.81				11.60×3.60×4.42				12.25×3.60×4.70		m
Machine weight	t		64				65				68				73		t
Hopper capacity	kg		100				200				400				400		kg
Oil tank ⑤	l		780				960				1250				1550		l

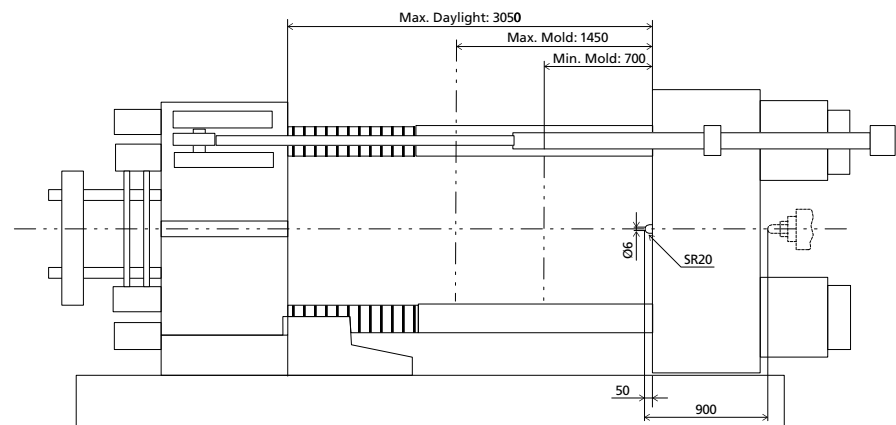
NOTE:

- ① with min. mold height / with max. mold height.
- ② moving platen: 2/3 of max. mold weight.
- ③ Plasticizing capacity (GPPS): GB standard, with application of GPPS plasticizing capacity of 3-zone screws.
- ④ Plasticizing capacity (HDPE): Euromap 19, with application of HDPE plasticizing capacity of barrier screws
The above plasticizing capacity is for reference only.
- ⑤ The oil tank volume refers to the volume of the oil tank itself, excluding the volume in cylinder and pipeline. In this sense, the customer is advised to prepare the hydraulic oil according to 1.35 times of the oil tank volume.

We reserve the right to make changes as a result of further technical advantages.

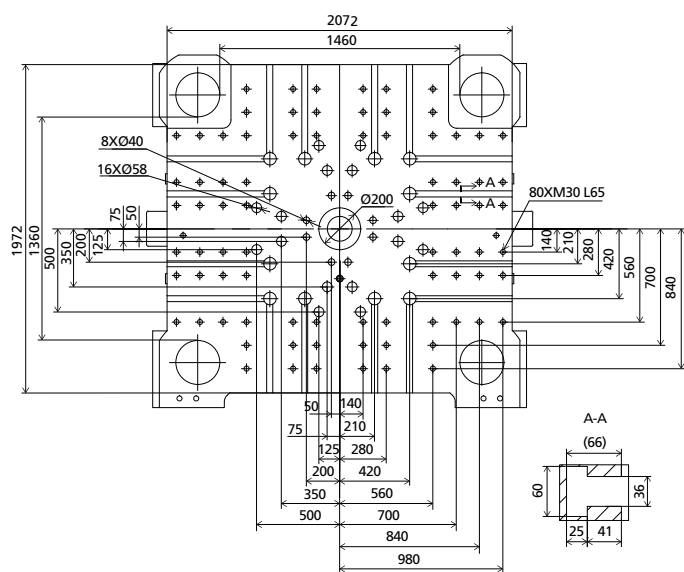
DIMENSIONS JU14000III

Clamping Unit



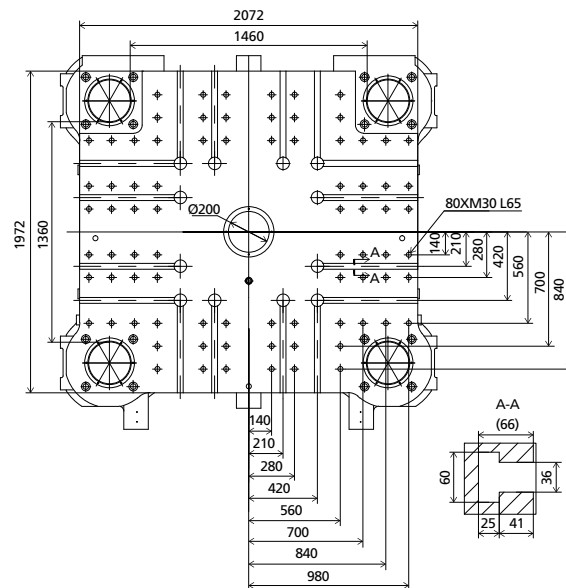
Platen dimensions

Moving platen



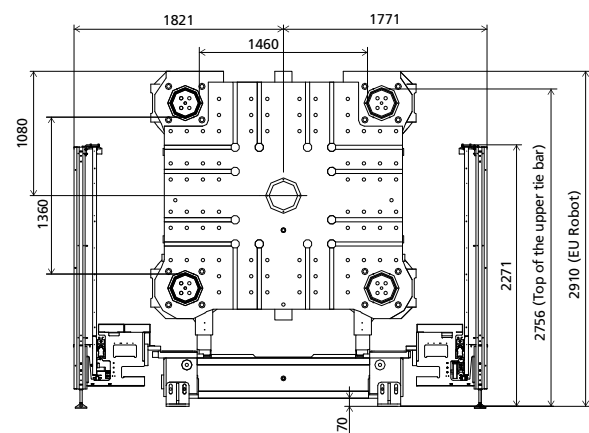
Platen dimensions

Fixed platen



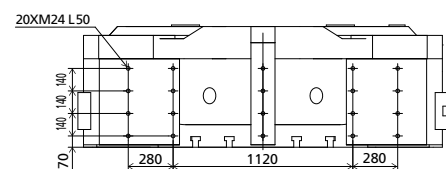
Robot

Mechanical interface

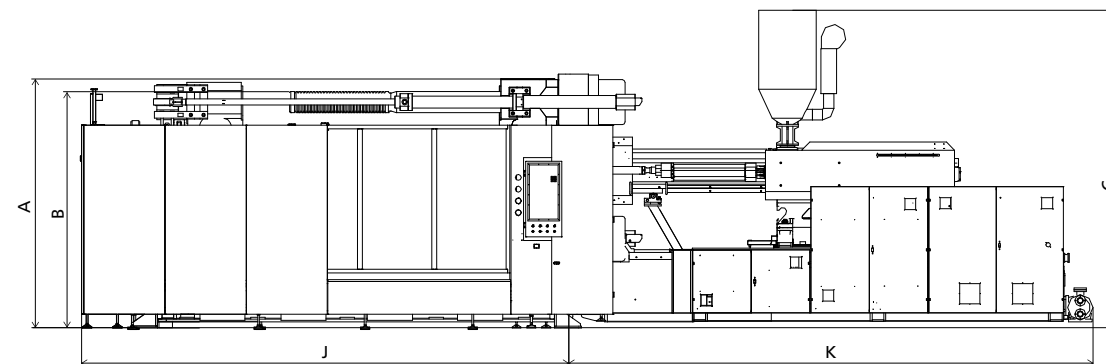


Robot

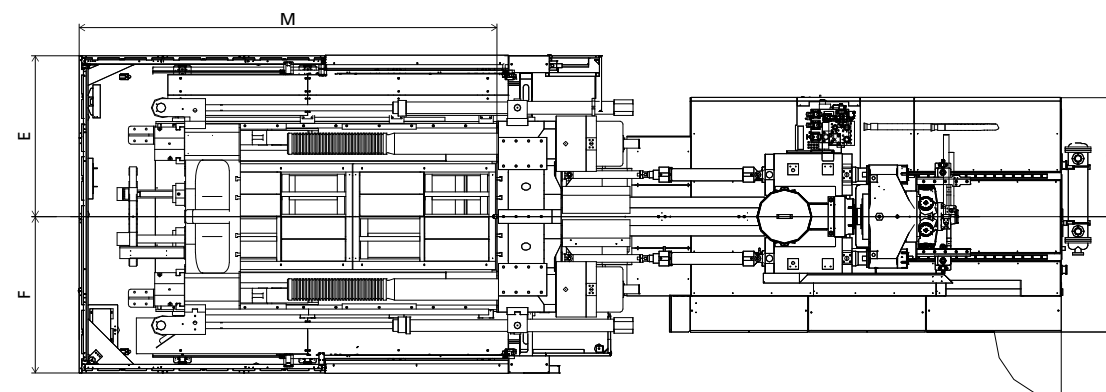
Top view fixed platen



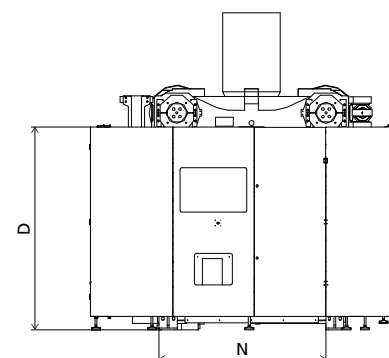
Front view



Top view



Side view



■ Standard

	A	B	C	D	E	F	G	H	I	J	K	M	N
6730	2910	2756	3080	2253	1821	1771	1198	1112	544	5776	4689	4951	2040
8930	2910	2756	3805	2253	1821	1771	1228	1172	544	5776	5021	4951	2040
11300	2910	2756	4420	2253	1821	1771	1318	1282	745	5776	5821	4951	2040
17300	2910	2756	4700	2253	1821	1771	1855	1305	850	5776	6114	4951	2040

INJECTION UNIT
DIMENSIONS (mm)

We reserve the right to make changes as a result of further technical advantages.

SPECIFICATION JU16000III

SPECIFICATIONS
INJECTION UNIT

	8930	11300	JU16000III			17300	
CLAMPING UNIT							
Clamping force	kN				16000	kN	Clamping force
Dist. between tie bars (H×V)	mm				1570×1285	mm	Dist. between tie bars (H×V)
Mold height max	mm				1550	mm	Mold height max
Mold height min	mm				700	mm	Mold height min
Ejector stroke	mm				400	mm	Ejector stroke
Ejector force	kN				330	kN	Ejector force
Max. daylight	mm				3250	mm	Max. daylight
Mold opening stroke ①	mm				2550/1700	mm	Mold opening stroke ①
Max. mold weight ②	t				33	t	Max. mold weight ②
INJECTION UNIT							
Screw diameter	mm	A 100 B 110 C 120 D 130	A 110 B 120 C 130 D 140	A 130 B 140 C 150		mm	Screw diameter
Screw L /D ratio	L/D	24.2 22 20.2 18.6	26.2 24 22.2 20.6	24 22.3 20.8		L/D	Screw L /D ratio
Injection volume (theoretical)	cm ³	4006 4847 5768 6769	5227 6220 7300 8467	8362 9698 11133		cm ³	Injection volume (theoretical)
Injection weight (PS)	g	3645 4410 5249 6160	4756 5661 6643 7705	7610 8825 10131		g	Injection weight (PS)
Injection rate	g/s	894 1081 1287 1511	924 1100 1291 1497	1236 1433 1646		g/s	Injection rate
Injection pressure	MPa	196 162 136 116	190 159 136 117	186 160 140		MPa	Injection pressure
Injection pressure (max)	MPa	223 184 155 132	218 183 156 135	211 182 158		MPa	Injection pressure (max)
Plasticizing rate (GPPS) ③	g/s	110 133 154 177	123 142 164 187	168 192 220		g/s	Plasticizing rate (GPPS) ③
Plasticizing rate (HDPE) ④	g/s	161 193 220 253	187 217 240 273	252 283 336		g/s	Plasticizing rate (HDPE) ④
Screw speed	rpm	127	105	102		rpm	Screw speed
OTHERS							
Pump motor power	kW	130	130	167		kW	Pump motor power
Heating power	kW	83	104	116		kW	Heating power
Machine dimension (L x W x H)	m	11.13×3.77×3.78	11.80×3.77×4.40	12.28×3.77×4.68		m	Machine dimension (L x W x H)
Machine weight	t	75	78	82		t	Machine weight
Hopper capacity	kg	200	400	400		kg	Hopper capacity
Oil tank ⑤	l	960	1250	1550		l	Oil tank

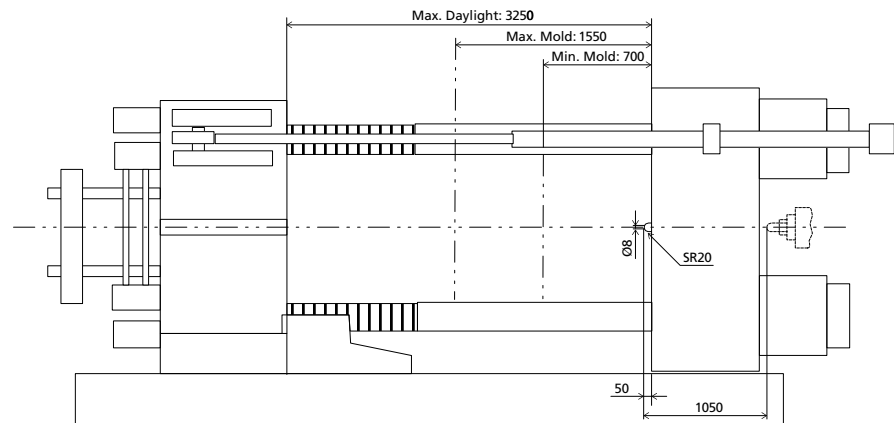
NOTE:

- ① with min. mold height / with max. mold height.
- ② moving platen: 2/3 of max. mold weight.
- ③ Plasticizing capacity (GPPS): GB standard, with application of GPPS plasticizing capacity of 3-zone screws.
- ④ Plasticizing capacity (HDPE): Euromap 19, with application of HDPE plasticizing capacity of barrier screws
The above plasticizing capacity is for reference only.
- ⑤ The oil tank volume refers to the volume of the oil tank itself, excluding the volume in cylinder and pipeline. In this sense, the customer is advised to prepare the hydraulic oil according to 1.35 times of the oil tank volume.

We reserve the right to make changes as a result of further technical advantages.

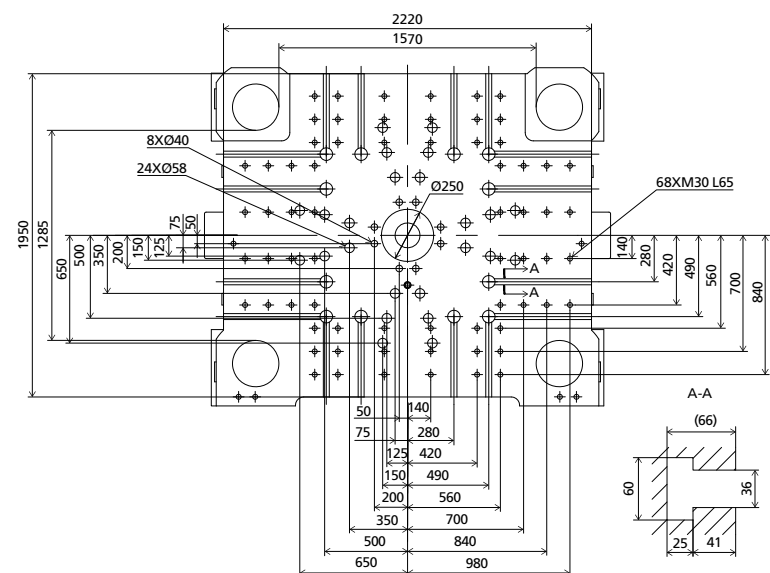
DIMENSIONS JU16000III

Clamping Unit



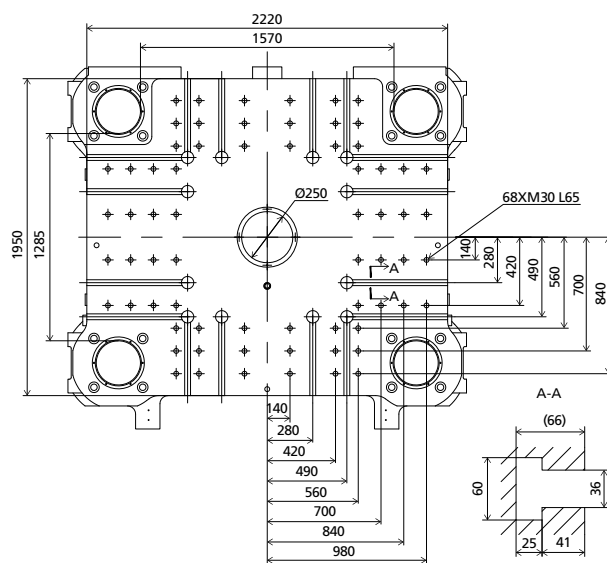
Platen dimensions

Moving platen



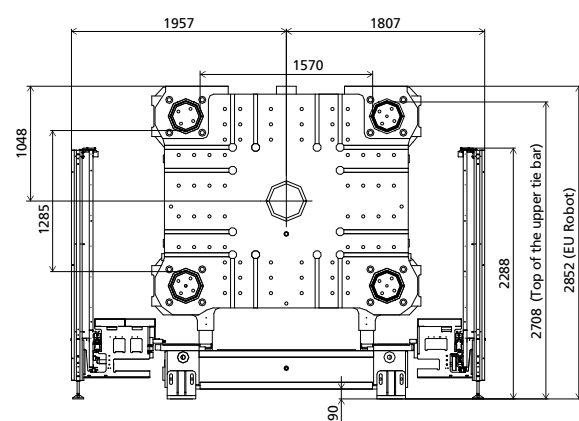
Platen dimensions

Fixed platen



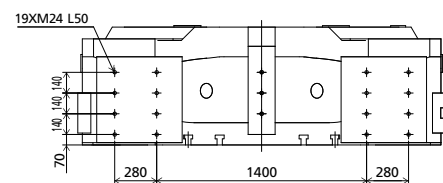
Robot

Mechanical interface

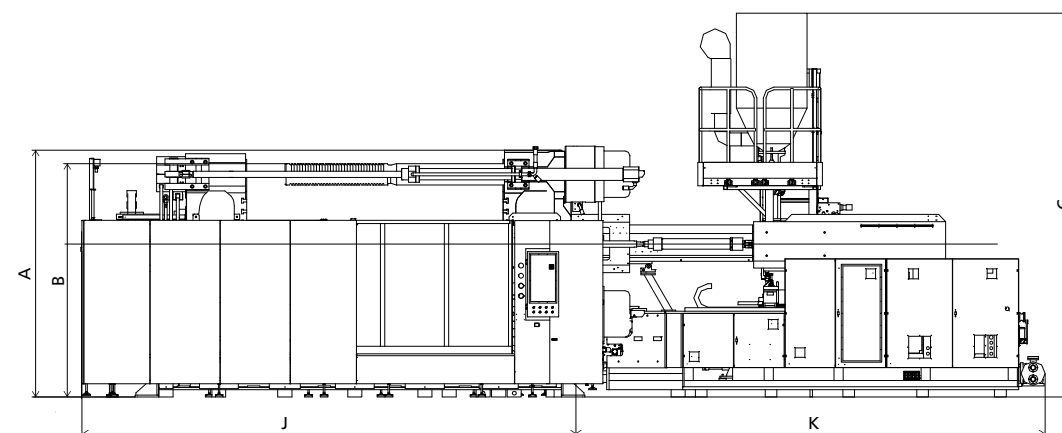


Robot

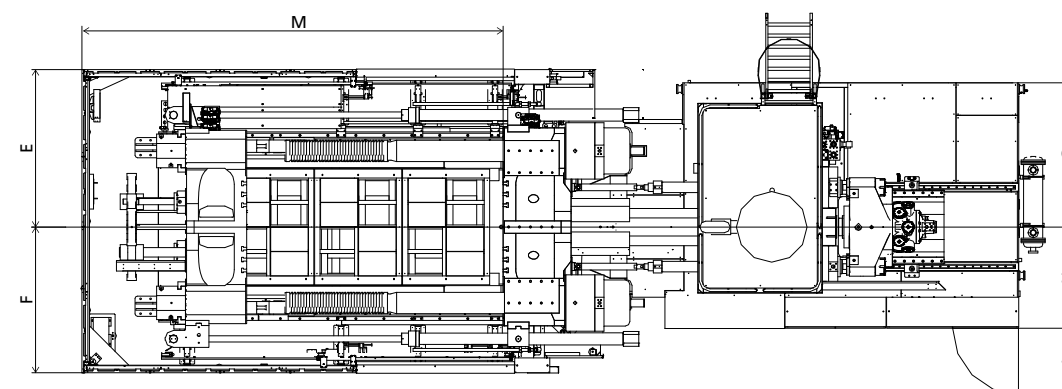
Top view fixed platen



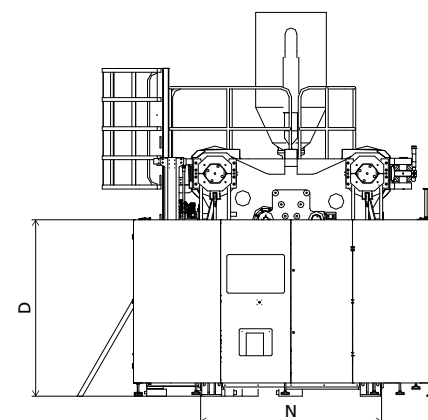
Front view



Top view



Side view



Standard

	A	B	C	D	E	F	G	H	I	J	K	M	N
8930	2852	2708	3780	2270	1957	1807	1228	1102	675	5976	5021	5121	2170
11300	2852	2708	4395	2270	1957	1807	1318	1282	745	5976	5821	5121	2170
17300	2852	2708	4675	2270	1957	1807	1855	1305	850	5976	6051	5121	2170

INJECTION UNIT
DIMENSIONS (mm)

We reserve the right to make changes as a result of further technical advantages.

SPECIFICATION JU18500III

SPECIFICATIONS
INJECTION UNIT

	11300				17300			22300				32300			
CLAMPING UNIT													CLAMPING UNIT		
Clamping force					18500									kN	Clamping force
Dist. between tie bars (H×V)					1870×1425									mm	Dist. between tie bars (H×V)
Mold height max					1600									mm	Mold height max
Mold height min					750									mm	Mold height min
Ejector stroke					450									mm	Ejector stroke
Ejector force					450									kN	Ejector force
Max. daylight					3350									mm	Max. daylight
Mold opening stroke ①					2600/1750									mm	Mold opening stroke ①
Max. mold weight ②					40									t	Max. mold weight ②
INJECTION UNIT													INJECTION UNIT		
Screw diameter	A	B	C	D	A	B	C	A	B	C	D	A	B	mm	Screw diameter
Screw L /D ratio														L/D	Screw L /D ratio
Injection volume (theoretical)														cm ³	Injection volume (theoretical)
Injection weight (PS)														g	Injection weight (PS)
Injection rate														g/s	Injection rate
Injection pressure														MPa	Injection pressure
Injection pressure (max)														MPa	Injection pressure (max)
Plasticizing rate (GPPS) ③														g/s	Plasticizing rate (GPPS) ③
Plasticizing rate (HDPE) ④														g/s	Plasticizing rate (HDPE) ④
Screw speed	105				102			85				72		rpm	Screw speed
OTHERS													OTHERS		
Pump motor power	130				167			185				185		kW	Pump motor power
Heating power	104				116			133				174		kW	Heating power
Machine dimension (L x W x H)	12.13×4.15×4.60				12.48×4.15×4.88			12.75×4.15×4.86				13.74×4.15×4.87		m	Machine dimension (L x W x H)
Machine weight	92				96			101				105		t	Machine weight
Hopper capacity	400				400			400				400		kg	Hopper capacity
Oil tank ⑤	1250				1550			1720				1720		l	Oil tank

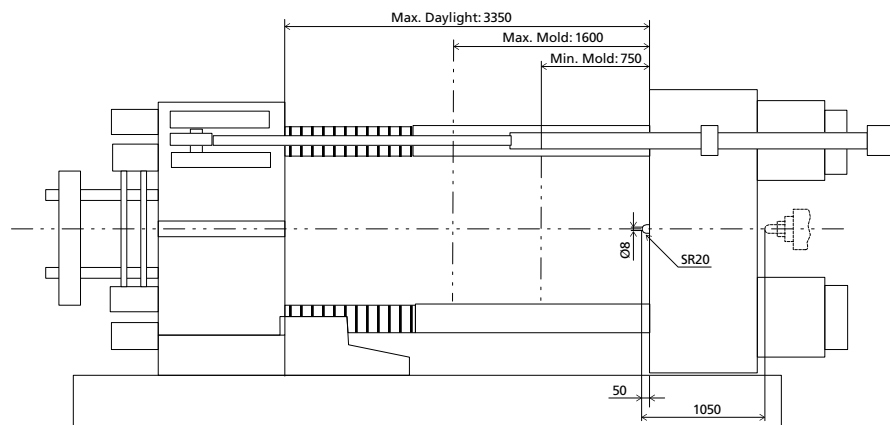
NOTE:

- ① with min. mold height / with max. mold height.
- ② moving platen: 2/3 of max. mold weight.
- ③ Plasticizing capacity (GPPS): GB standard, with application of GPPS plasticizing capacity of 3-zone screws.
- ④ Plasticizing capacity (HDPE): Euromap 19, with application of HDPE plasticizing capacity of barrier screws
The above plasticizing capacity is for reference only.
- ⑤ The oil tank volume refers to the volume of the oil tank itself, excluding the volume in cylinder and pipeline. In this sense, the customer is advised to prepare the hydraulic oil according to 1.35 times of the oil tank volume.

We reserve the right to make changes as a result of further technical advantages.

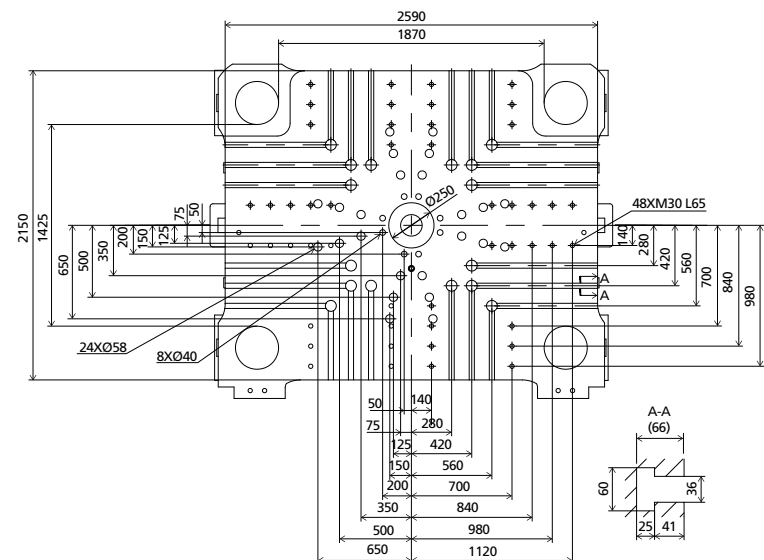
DIMENSIONS JU18500III

Clamping Unit



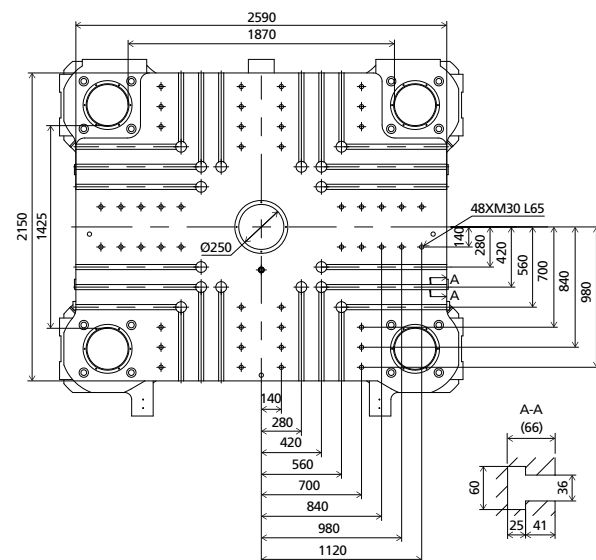
Platen dimensions

Moving platen



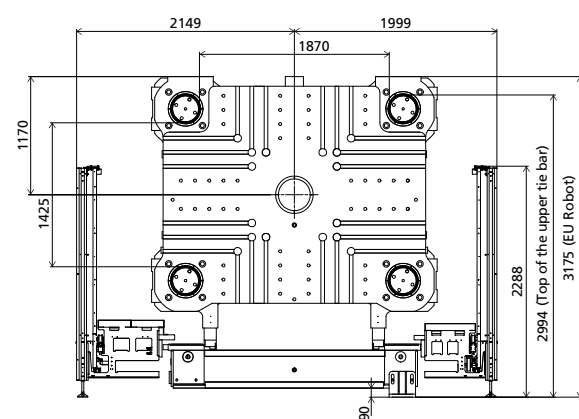
Platen dimensions

Fixed platen



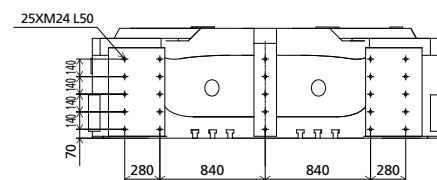
Robot

Mechanical interface

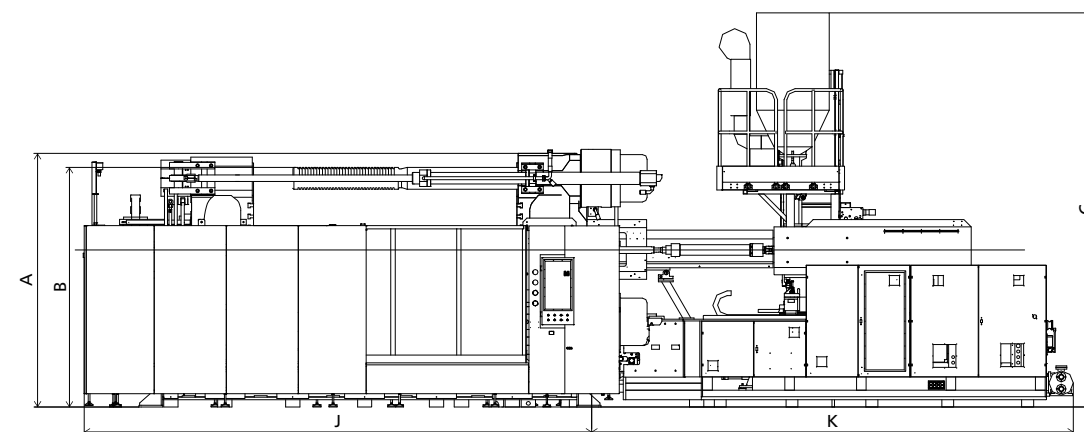


Robot

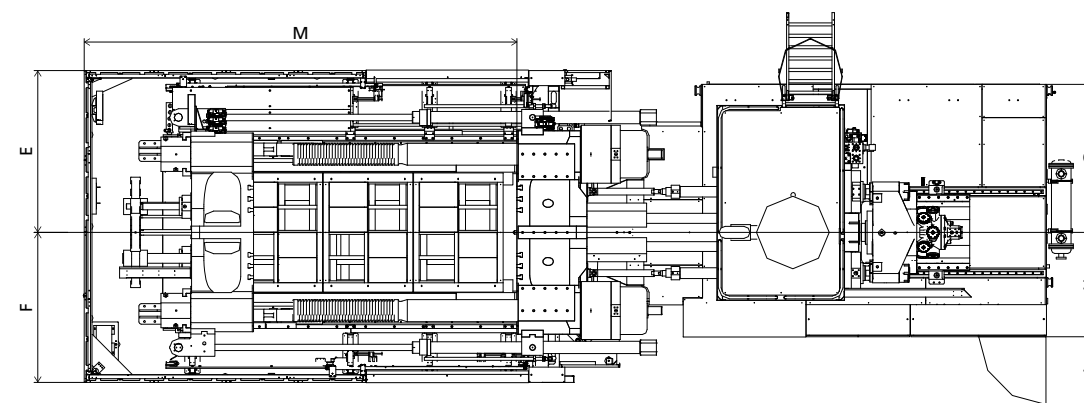
Top view fixed platen



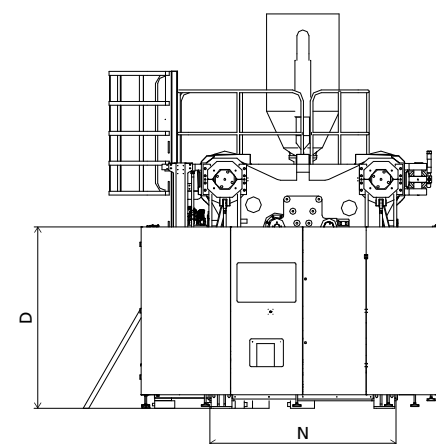
Front view



Top view



Side view



Standard

	A	B	C	D	E	F	G	H	I	J	K	M	N
11300	3175	2994	4595	2270	2149	1999	1318	1282	745	6306	5821	5321	2390
17300	3175	2994	4875	2270	2149	1999	1855	1305	850	6306	5971	5321	2390
22300	3175	2994	4860	2270	2149	1999	1925	1435	850	6306	6443	5321	2390
32300	3175	2994	4870	2270	2149	1999	1925	1435	850	6306	7431	5321	2390

INJECTION UNIT
DIMENSIONS (mm)

We reserve the right to make changes as a result of further technical advantages.

SPECIFICATION JU21000III

SPECIFICATIONS
INJECTION UNIT

	11300	17300	JU21000III				22300	32300	40300									
CLAMPING UNIT																		
Clamping force	kN					21000			kN	Clamping force								
Dist. between tie bars (H×V)	mm					1800×1600			mm	Dist. between tie bars (H×V)								
Mold height max	mm					1700			mm	Mold height max								
Mold height min	mm					800			mm	Mold height min								
Ejector stroke	mm					450			mm	Ejector stroke								
Ejector force	kN					450			kN	Ejector force								
Max. daylight	mm					3500			mm	Max. daylight								
Mold opening stroke ①	mm					2700/1800			mm	Mold opening stroke ①								
Max. mold weight ②	t					50			t	Max. mold weight ②								
INJECTION UNIT																		
Screw diameter	mm	A	B	C	D	A	B	C	D	A	B	A	B	mm	Screw diameter			
Screw L /D ratio	L/D	110	120	130	140	130	140	150	140	150	160	170	160	170	L/D	Screw L /D ratio		
Injection volume (theoretical)	cm ³	26.2	24	22.2	20.6	24	22.3	20.8	24	22.4	21	19.8	24	22.6	23.5	21.6	cm ³	Injection volume (theoretical)
Injection weight (PS)	g	5227	6220	7300	8467	8362	9698	11133	10468	12017	13672	15435	17492	19747	23379	27687	g	Injection weight (PS)
Injection rate	g/s	4756	5661	6643	7705	7610	8825	10131	9526	10935	12442	14046	15918	17970	21275	25195	g/s	Injection rate
Injection pressure	MPa	1211	1441	1691	1961	1236	1433	1646	1379	1583	1801	2033	1590	1795	1530	1811	MPa	Injection pressure
Injection pressure (max)	MPa	190	159	136	117	186	160	140	185	161	142	126	161	142	159	134	MPa	Injection pressure (max)
Plasticizing rate (GPPS) ③	g/s	218	183	156	135	211	182	158	211	184	162	143	181	160	180	152	g/s	Plasticizing rate (GPPS) ③
Plasticizing rate (HDPE) ④	g/s	146	169	195	223	168	192	220	155	176	196	222	--	--	--	--	g/s	Plasticizing rate (HDPE) ④
Screw speed	rpm	223	259	286	325	252	283	336	243	294	303	334	280	310	309	320	rpm	Screw speed
OTHERS																		
Pump motor power	kW		125				102			85			72		70		kW	Pump motor power
Heating power	kW																kW	Heating power
Machine dimension (L x W x H)	m																m	Machine dimension (L x W x H)
Machine weight	t																t	Machine weight
Hopper capacity	kg																kg	Hopper capacity
Oil tank ⑤	l																l	Oil tank

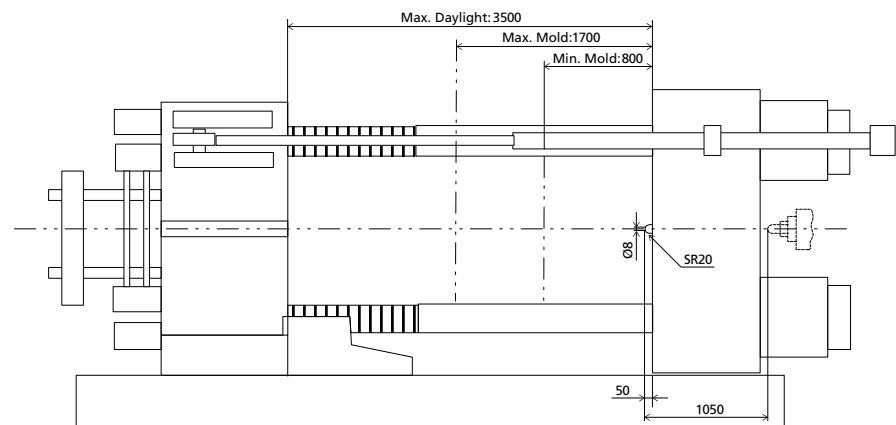
NOTE:

- ① with min. mold height / with max. mold height.
- ② moving platen: 2/3 of max. mold weight.
- ③ Plasticizing capacity (GPPS): GB standard, with application of GPPS plasticizing capacity of 3-zone screws.
- ④ Plasticizing capacity (HDPE): Euromap 19, with application of HDPE plasticizing capacity of barrier screws
The above plasticizing capacity is for reference only.
- ⑤ The oil tank volume refers to the volume of the oil tank itself, excluding the volume in cylinder and pipeline. In this sense, the customer is advised to prepare the hydraulic oil according to 1.35 times of the oil tank volume.

We reserve the right to make changes as a result of further technical advantages.

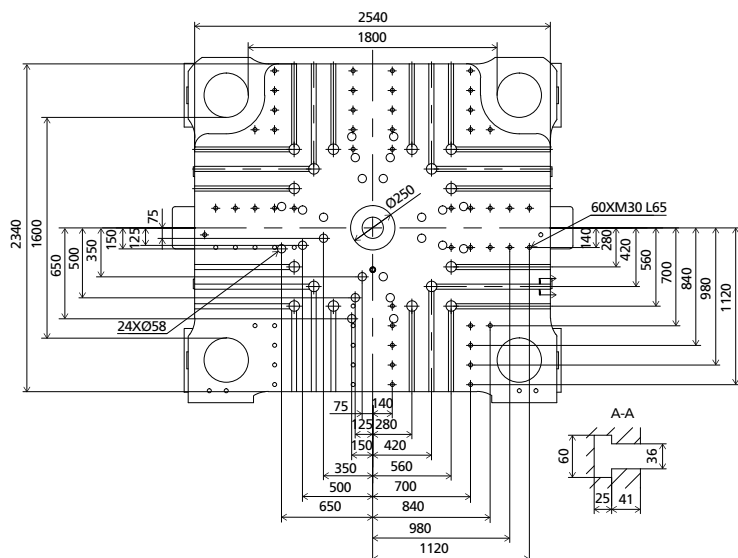
DIMENSIONS JU21000III

Clamping Unit



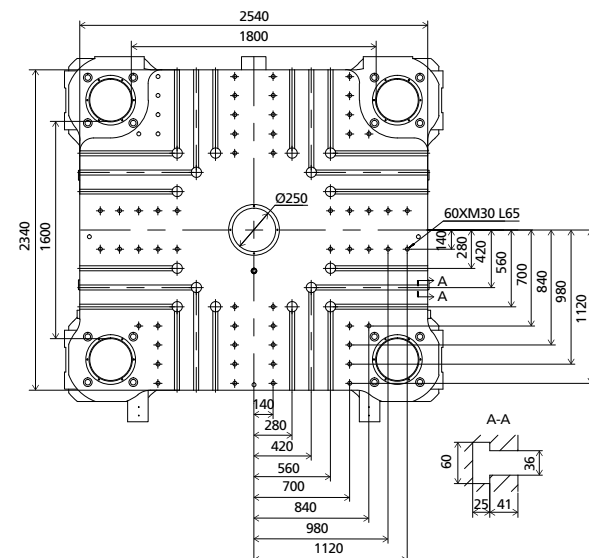
Platen dimensions

Moving platen



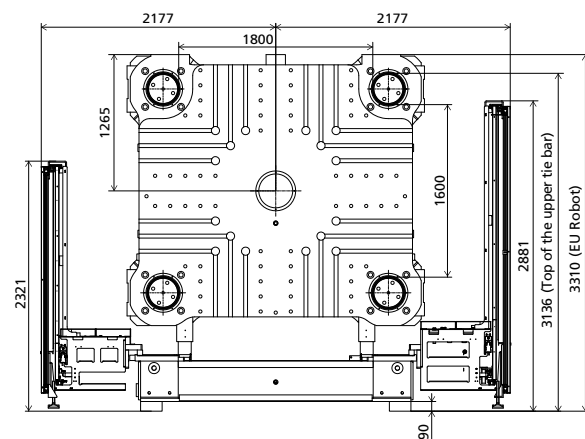
Platen dimensions

Fixed platen



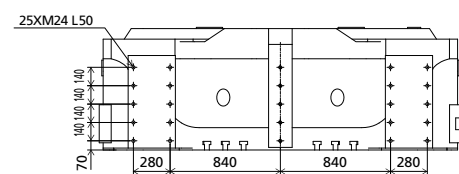
Robot

Mechanical interface

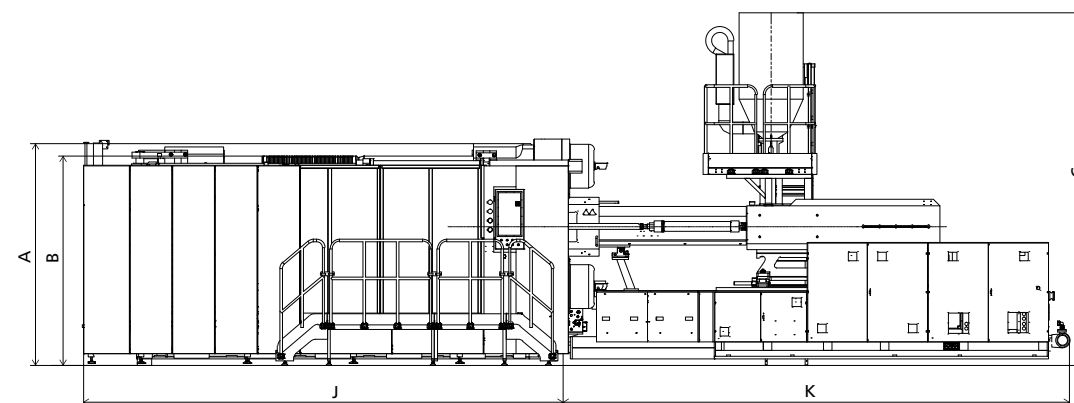


Robot

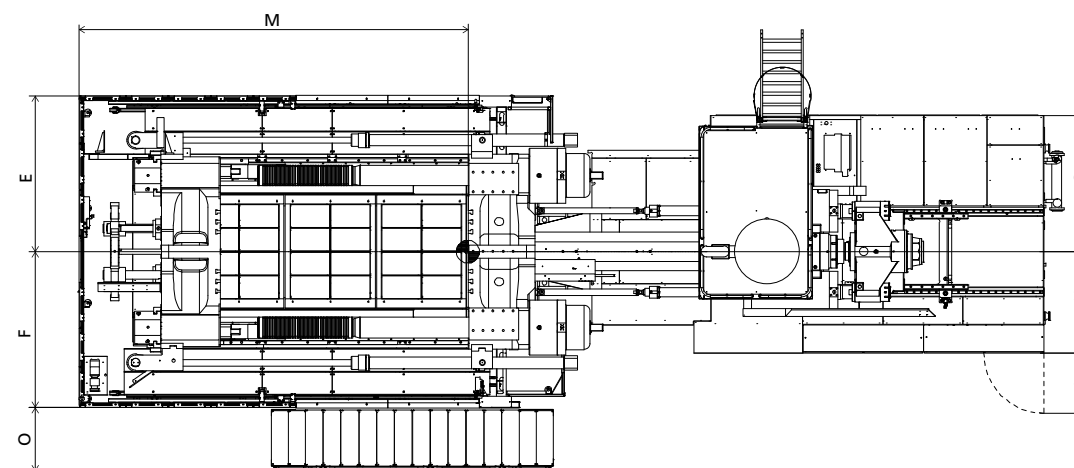
Top view fixed platen



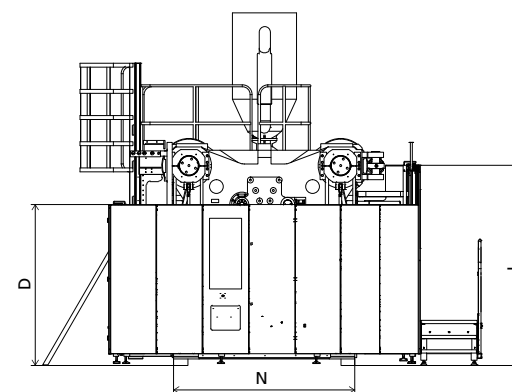
Front view



Top view



Side view



Standard

	A	B	C	D	E	F	G	H	I	J	K	L	M	N	O
11300	3310	3136	4635	2270	2177	2177	1318	1282	745	6469	5821	2830	5490	2510	864
17300	3310	3136	4915	2270	2177	2177	1855	1305	850	6469	6051	2830	5490	2510	864
22300	3310	3136	4900	2270	2177	2177	1925	1435	850	6469	6443	2830	5490	2510	864
32300	3310	3136	4910	2270	2177	2177	1925	1435	850	6469	7431	2830	5490	2510	864
40300	3310	3136	4950	2270	2177	2177	1965	1515	850	6469	7938	2830	5490	2510	864

INJECTION UNIT
DIMENSIONS (mm)

We reserve the right to make changes as a result of further technical advantages.

SPECIFICATION JU24000III

SPECIFICATIONS
INJECTION UNIT

	17300	22300	32300	JU24000III 40300	
CLAMPING UNIT					CLAMPING UNIT
Clamping force	kN			24000	kN
Dist. between tie bars (H×V)	mm			2020×1620	mm
Mold height max	mm			1800	mm
Mold height min	mm			800	mm
Ejector stroke	mm			500	mm
Ejector force	kN			450	kN
Max. daylight	mm			3800	mm
Mold opening stroke ①	mm			3000/2000	mm
Max. mold weight ②	t			59	t
INJECTION UNIT					INJECTION UNIT
Screw diameter	mm	A B C	A B C D	A B	mm
Screw L /D ratio	L/D	24 22.3 20.8	24 22.4 21 19.8	24 22.6	L/D
Injection volume (theoretical)	cm ³	8362 9698 11133	10468 12017 13672 15435	17492 19747	cm ³
Injection weight (PS)	g	7610 8825 10131	9526 10935 12442 14046	15918 17970	g
Injection rate	g/s	1375 1595 1831	1379 1583 1801 2033	1590 1795	g/s
Injection pressure	MPa	186 160 140	185 161 142 126	161 142	MPa
Injection pressure (max)	MPa	211 182 158	211 184 162 143	181 160	MPa
Plasticizing rate (GPPS) ③	g/s	188 215 246	155 176 196 222	-- --	g/s
Plasticizing rate (HDPE) ④	g/s	282 316 376	243 294 303 334	280 310	g/s
Screw speed	rpm	114	85	72	70
OTHERS					OTHERS
Pump motor power	kW	185	185	185	205
Heating power	kW	116	133	174	215
Machine dimension (L x W x H)	m	13.42×5.46×5.04	13.58×5.46×5.02	14.57×5.46×5.03	15.14×5.46×5.07
Machine weight	t	125	129	133	140
Hopper capacity	kg	400	400	400	400
Oil tank ⑤	l	1550	1720	1720	2390

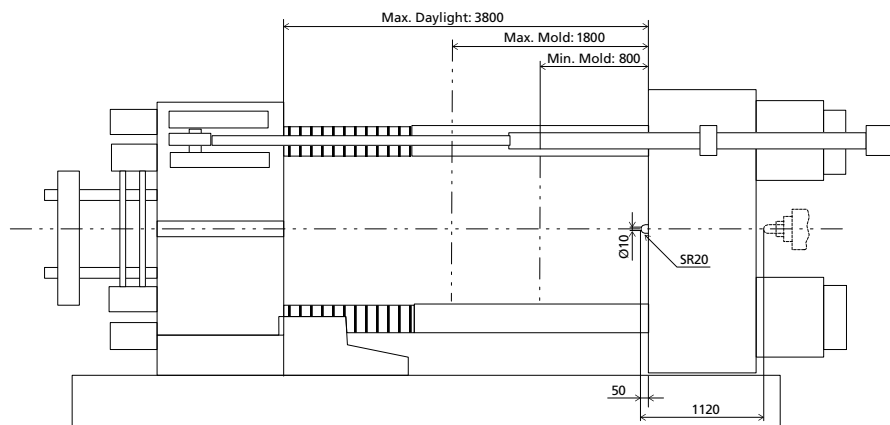
NOTE:

- ① with min. mold height / with max. mold height.
- ② moving platen: 2/3 of max. mold weight.
- ③ Plasticizing capacity (GPPS): GB standard, with application of GPPS plasticizing capacity of 3-zone screws.
- ④ Plasticizing capacity (HDPE): Euromap 19, with application of HDPE plasticizing capacity of barrier screws
The above plasticizing capacity is for reference only.
- ⑤ The oil tank volume refers to the volume of the oil tank itself, excluding the volume in cylinder and pipeline. In this sense, the customer is advised to prepare the hydraulic oil according to 1.35 times of the oil tank volume.

We reserve the right to make changes as a result of further technical advantages.

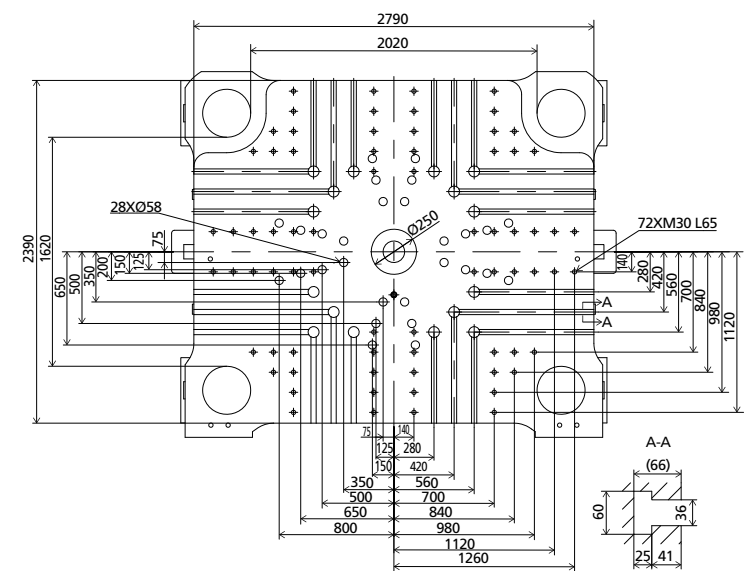
DIMENSIONS JU24000III

Clamping Unit



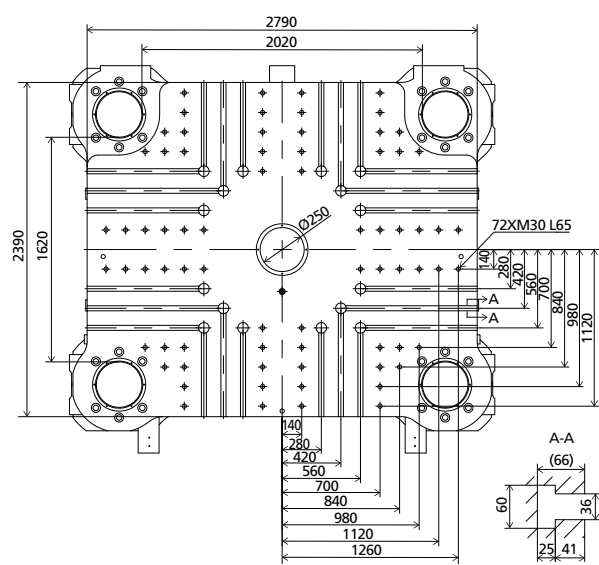
Platen dimensions

Moving platen



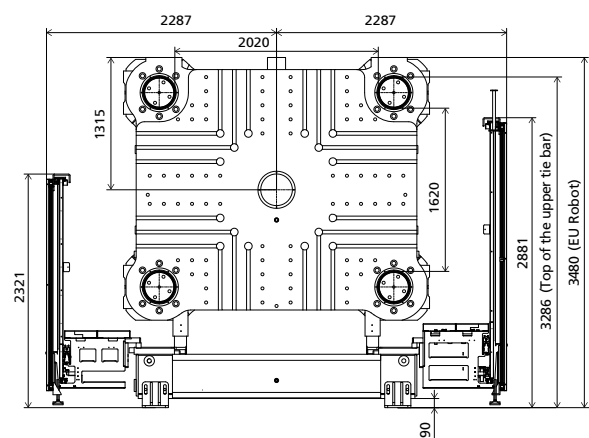
Platen dimensions

Fixed platen



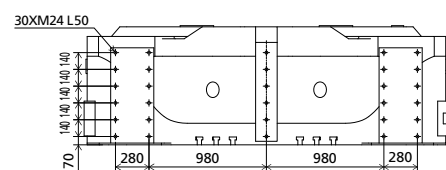
Robot

Mechanical interface

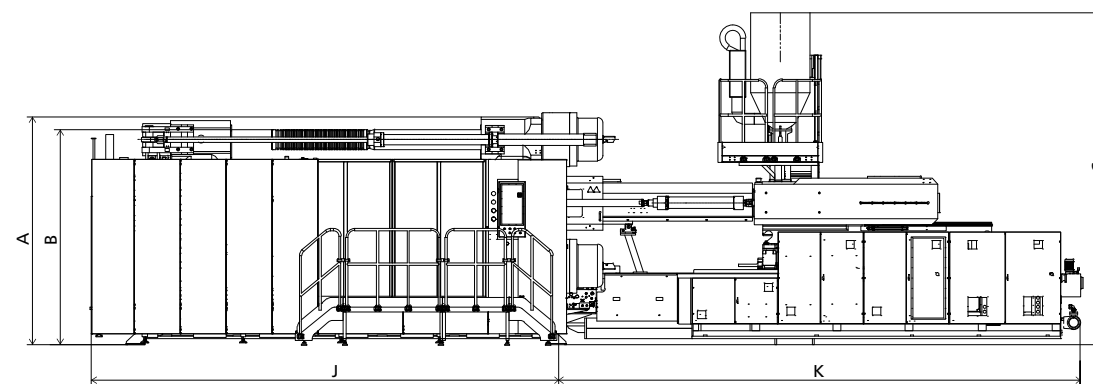


Robot

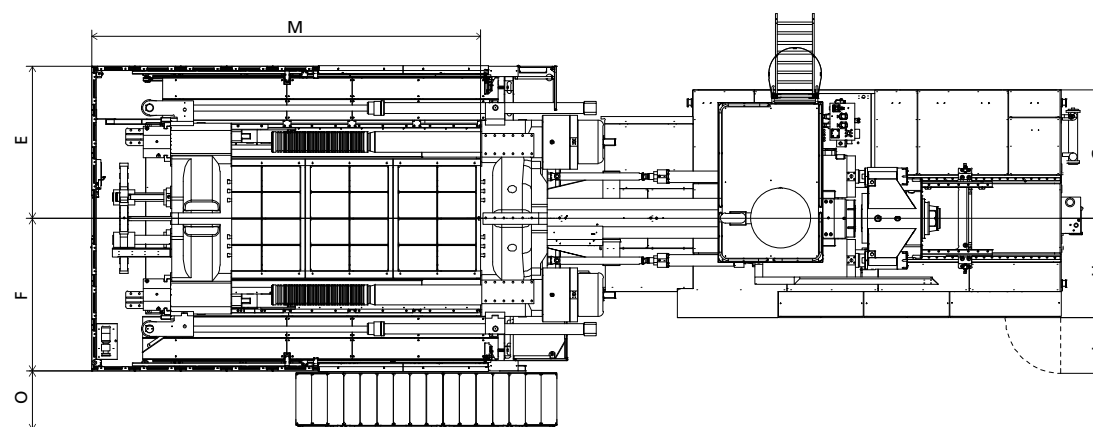
Top view fixed platen



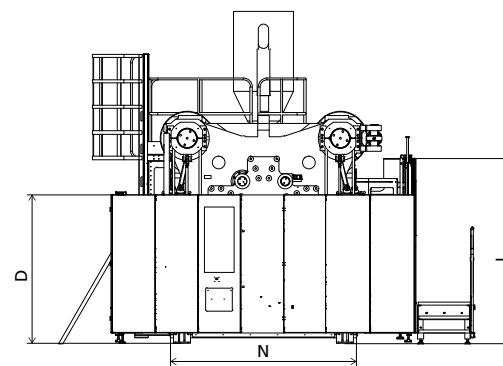
Front view



Top view



Side view



Standard

	A	B	C	D	E	F	G	H	I	J	K	L	M	N	O
17300	3480	3286	5035	2270	2287	2287	1855	1305	850	7125	6051	2830	5936	2750	864
22300	3480	3286	5020	2270	2287	2287	1925	1435	850	7125	6443	2830	5936	2750	864
32300	3480	3286	5030	2270	2287	2287	1925	1435	850	7125	7431	2830	5936	2750	864
40300	3480	3286	5070	2270	2287	2287	1965	1515	850	7125	7938	2830	5936	2750	864

INJECTION UNIT
DIMENSIONS (mm)

We reserve the right to make changes as a result of further technical advantages.

SPECIFICATION JU28000III

SPECIFICATIONS
INJECTION UNIT

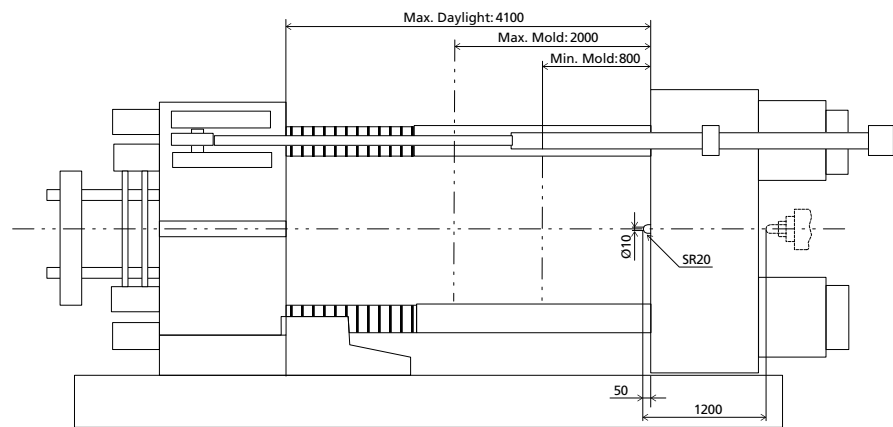
	22300	32300	40300	JU28000III		50300	62300					
CLAMPING UNIT												
Clamping force	kN					28000		kN				
Dist. between tie bars (H×V)	mm					2185×1755		mm				
Mold height max	mm					2000		mm				
Mold height min	mm					800		mm				
Ejector stroke	mm					500		mm				
Ejector force	kN					450		kN				
Max. daylight	mm					4100		mm				
Mold opening stroke ①	mm					3300/2100		mm				
Max. mold weight ②	t					66		t				
INJECTION UNIT												
Screw diameter	mm	A 140	B 150	C 160	D 170	A 160	B 170	A 170	B 185	200	220	mm
Screw L /D ratio	L/D	24	22.4	21	19.8	24	22.6	23.5	21.6	20	20.5	L/D
Injection volume (theoretical)	cm ³	10468	12017	13672	15435	17492	19747	23379	27687	35186	45616	cm ³
Injection weight (PS)	g	9526	10935	12442	14046	15918	17970	21275	25195	32019	41510	g
Injection rate	g/s	1460	1676	1907	2153	1684	1901	1530	1811	2314	2492	g/s
Injection pressure	MPa	185	161	142	126	161	142	159	134	128	119	MPa
Injection pressure (max)	MPa	211	184	162	143	181	160	180	152	143	134	MPa
Plasticizing rate (GPPS) ③	g/s	171	195	216	245	--	--	--	--	--	--	g/s
Plasticizing rate (HDPE) ④	g/s	269	325	335	369	315	349	309	320	380	370	g/s
Screw speed	rpm	94				81		70		70	53	rpm
OTHERS												
Pump motor power	kW	205				205		205		255	255	kW
Heating power	kW	133				174		215		215	223	kW
Machine dimension (L x W x H)	m	14.02×5.60×5.17				15.01×5.60×5.18		15.51×5.60×5.22		15.93×5.60×5.26	16.66×5.60×5.26	m
Machine weight	t	153				157		164		169	174	t
Hopper capacity	kg	400				400		400		400	400	kg
Oil tank ⑤	l	1720				1720		2390		2880	2880	l

NOTE:
 ① with min. mold height / with max. mold height.
 ② moving platen: 2/3 of max. mold weight.
 ③ Plasticizing capacity (GPPS): GB standard, with application of GPPS plasticizing capacity of 3-zone screws.
 ④ Plasticizing capacity (HDPE): Euromap 19, with application of HDPE plasticizing capacity of barrier screws
 The above plasticizing capacity is for reference only.
 ⑤ The oil tank volume refers to the volume of the oil tank itself, excluding the volume in cylinder and pipeline. In this sense, the customer is advised to prepare the hydraulic oil according to 1.35 times of the oil tank volume.

We reserve the right to make changes as a result of further technical advantages.

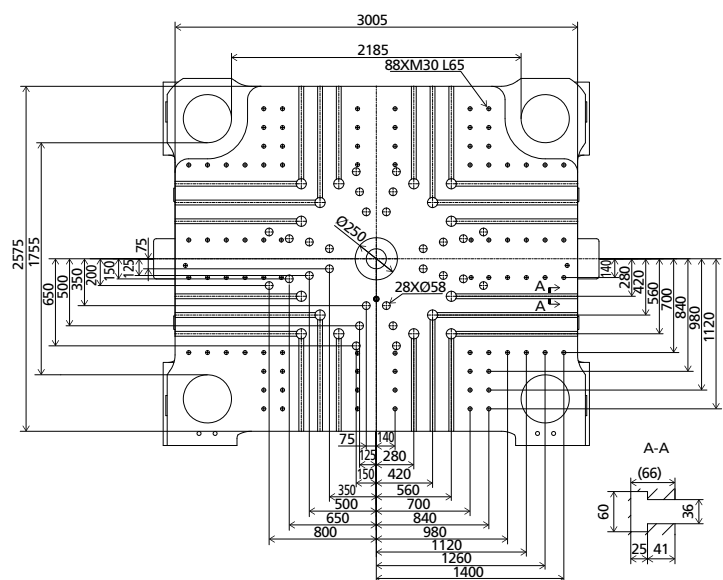
DIMENSIONS JU28000III

Clamping Unit



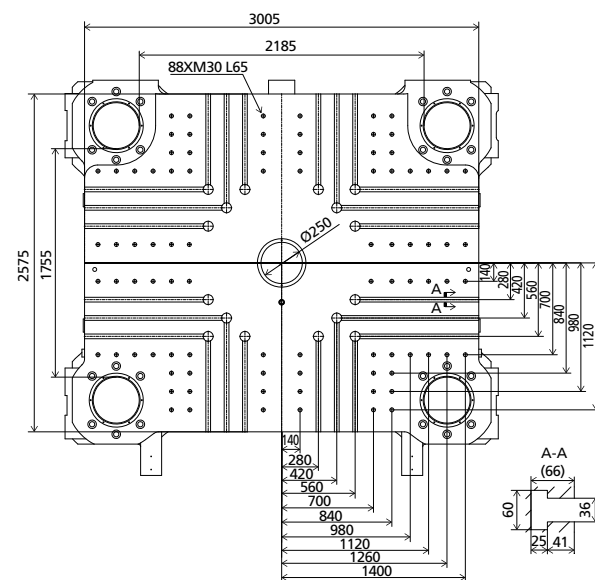
Platen dimensions

Moving platen



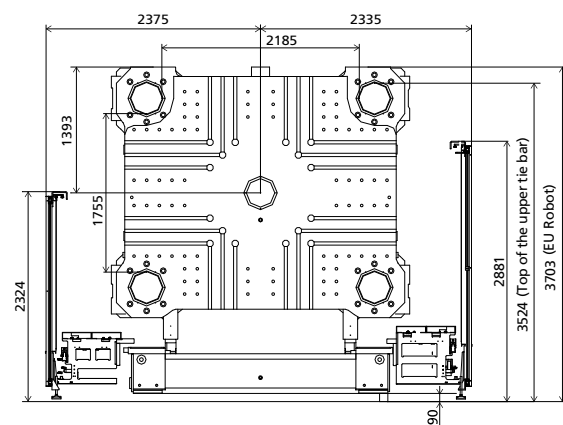
Platen dimensions

Fixed platen



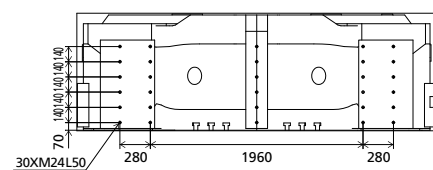
Robot

Mechanical interface

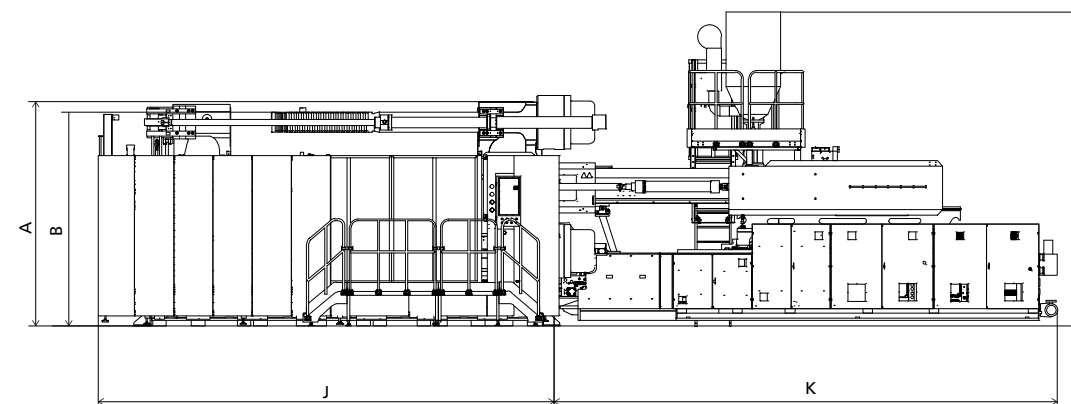


Robot

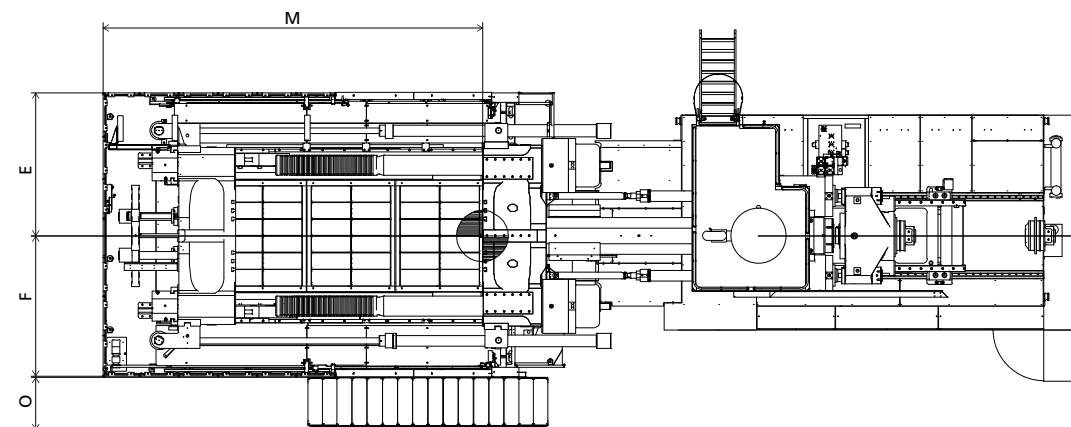
Top view fixed platen



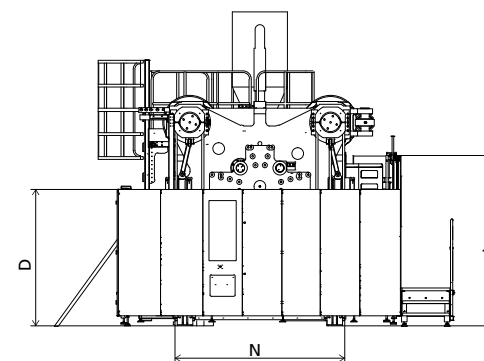
Front view



Top view



Side view



Standard

	A	B	C	D	E	F	G	H	I	J	K	L	M	N	O
22300	3703	3524	5165	2270	2375	2335	1925	1435	850	7570	6443	2830	6300	2817	864
32300	3703	3524	5175	2270	2375	2335	1925	1435	850	7570	7431	2830	6300	2817	864
40300	3703	3524	5215	2270	2375	2335	1965	1515	850	7570	7938	2830	6300	2817	864
50300	3703	3524	5255	2270	2375	2335	2005	1565	850	7570	8355	2830	6300	2817	864
62300	3703	3524	5255	2270	2375	2335	2005	1565	850	7570	8895	2830	6300	2817	864

INJECTION UNIT
DIMENSIONS (mm)

We reserve the right to make changes as a result of further technical advantages.

SPECIFICATION JU33000III

SPECIFICATIONS
INJECTION UNIT

	22300	32300	40300	50300	JU33000III 62300							
CLAMPING UNIT						CLAMPING UNIT						
Clamping force	kN					33000	kN					
Dist. between tie bars (H×V)	mm					2270×1900	mm					
Mold height max	mm					2000	mm					
Mold height min	mm					1000	mm					
Ejector stroke	mm					550	mm					
Ejector force	kN					580	kN					
Max. daylight	mm					4200	mm					
Mold opening stroke ①	mm					3200/2200	mm					
Max. mold weight ②	t					75	t					
INJECTION UNIT						INJECTION UNIT						
Screw diameter	A	B	C	D	A	B	A	B	200	220	mm	
Screw L /D ratio	L/D	24	22.4	21	19.8	24	22.6	23.5	21.6	20	20.5	L/D
Injection volume (theoretical)	cm ³	10468	12017	13672	15435	17492	19747	23379	27687	35186	45616	cm ³
Injection weight (PS)	g	9526	10935	12442	14046	15918	17970	21275	25195	32019	41510	g
Injection rate	g/s	1460	1676	1907	2153	1684	1901	1530	1811	2314	2492	g/s
Injection pressure	MPa	185	161	142	126	161	142	159	134	128	119	MPa
Injection pressure (max)	MPa	211	184	162	143	181	160	180	152	143	134	MPa
Plasticizing rate (GPPS) ③	g/s	171	195	216	245	--	--	--	--	--	--	g/s
Plasticizing rate (HDPE) ④	g/s	269	325	335	369	315	349	309	320	380	370	g/s
Screw speed	rpm	94		81		70		70		53		rpm
OTHERS						OTHERS						
Pump motor power	kW	205		205		205		255		255		kW
Heating power	kW	133		174		215		215		223		kW
Machine dimension (L x W x H)	m	14.42×5.92×5.34		15.41×5.92×5.34		15.92×5.92×5.38		16.33×5.92×5.42		17.07×5.92×5.42		m
Machine weight	t	177		181		189		194		198		t
Hopper capacity	kg	400		400		400		400		400		kg
Oil tank ⑤	l	1720		1720		2390		2880		2880		l

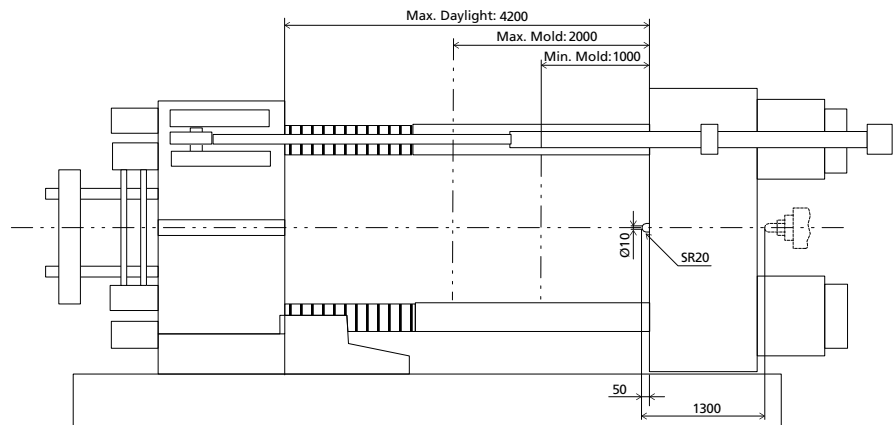
NOTE:

- ① with min. mold height / with max. mold height.
- ② moving platen: 2/3 of max. mold weight.
- ③ Plasticizing capacity (GPPS): GB standard, with application of GPPS plasticizing capacity of 3-zone screws.
- ④ Plasticizing capacity (HDPE): Euromap 19, with application of HDPE plasticizing capacity of barrier screws
The above plasticizing capacity is for reference only.
- ⑤ The oil tank volume refers to the volume of the oil tank itself, excluding the volume in cylinder and pipeline. In this sense, the customer is advised to prepare the hydraulic oil according to 1.35 times of the oil tank volume.

We reserve the right to make changes as a result of further technical advantages.

DIMENSIONS JU33000III

Clamping Unit

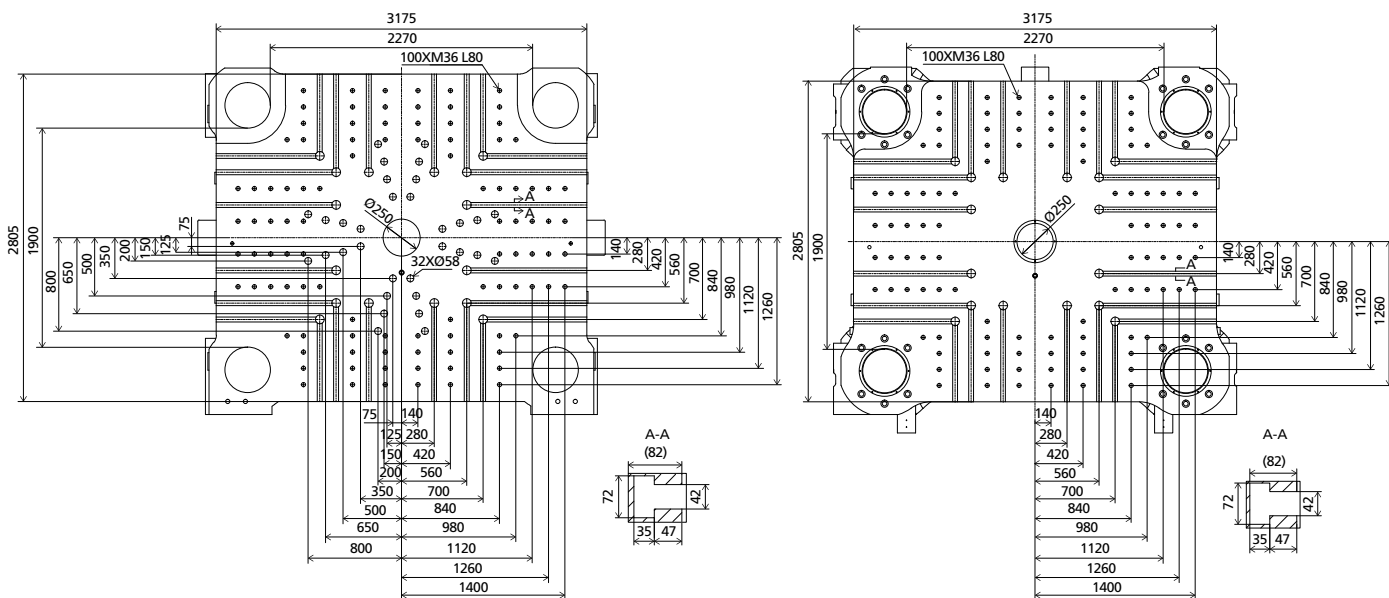


Platen dimensions

Moving platen

Platen dimensions

Fixed platen

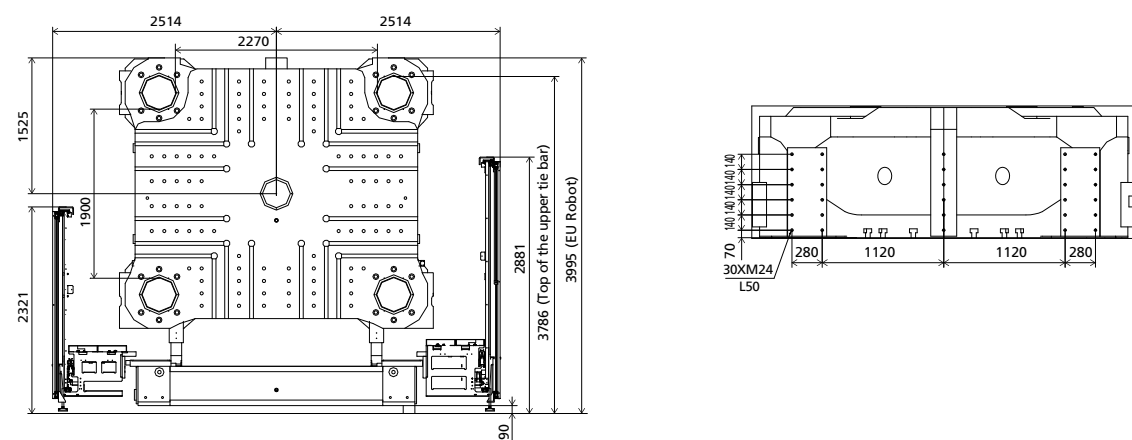


Robot

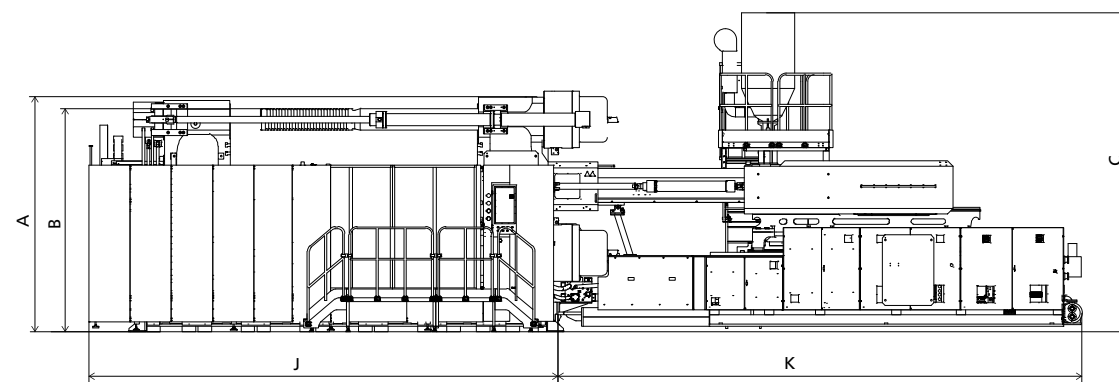
Mechanical interface

Robot

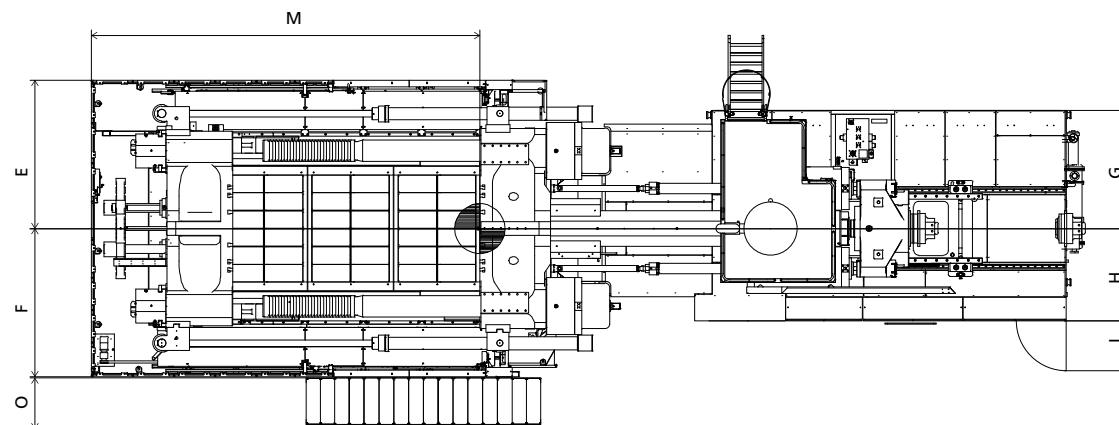
Top view fixed platen



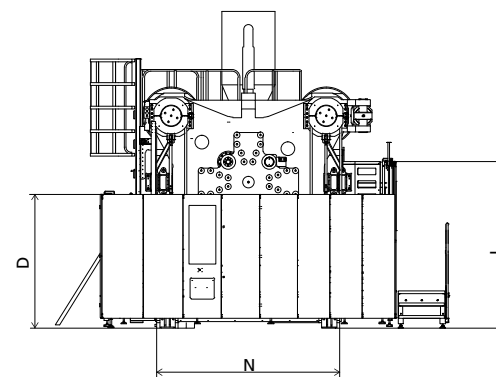
Front view



Top view



Side view



Standard

	A	B	C	D	E	F	G	H	I	J	K	L	M	N	O
22300	3995	3786	5325	2270	2514	2514	1925	1435	850	7975	6443	2830	6605	3110	864
32300	3995	3786	5335	2270	2514	2514	1925	1435	850	7975	7431	2830	6605	3110	864
40300	3995	3786	5375	2270	2514	2514	1965	1515	850	7975	7938	2830	6605	3110	864
50300	3995	3786	5415	2270	2514	2514	2005	1565	850	7975	8355	2830	6605	3110	864
62300	3995	3786	5415	2270	2514	2514	2005	1565	850	7975	8895	2830	6605	3110	864

INJECTION UNIT
DIMENSIONS (mm)

We reserve the right to make changes as a result of further technical advantages.

SPECIFICATION JU40000III

SPECIFICATIONS

INJECTION UNIT

		JU40000III			
		93300	106300		
CLAMPING UNIT				CLAMPING UNIT	
Clamping force	kN		40000	kN	Clamping force
Dist. between tie bars (H×V)	mm		2400×2000	mm	Dist. between tie bars (H×V)
Mold height max	mm		2200	mm	Mold height max
Mold height min	mm		1000	mm	Mold height min
Ejector stroke	mm		550	mm	Ejector stroke
Ejector force	kN		580	kN	Ejector force
Max. daylight	mm		4460	mm	Max. daylight
Mold opening stroke ①	mm		3460/2260	mm	Mold opening stroke ①
Max. mold weight ②	t		86	t	Max. mold weight ②
INJECTION UNIT				INJECTION UNIT	
Screw diameter	mm	240	260	mm	Screw diameter
Screw L /D ratio	L/D	23	23	L/D	Screw L /D ratio
Injection volume (theoretical)	cm ³	60168	80170	cm ³	Injection volume (theoretical)
Injection weight (PS)	g	54753	72955	g	Injection weight (PS)
Injection rate	g/s	2860	3356	g/s	Injection rate
Injection pressure	MPa	141	120	MPa	Injection pressure
Injection pressure (max)	MPa	156	133	MPa	Injection pressure (max)
Plasticizing rate (GPPS) ③	g/s	--	--	g/s	Plasticizing rate (GPPS) ③
Plasticizing rate (HDPE) ④	g/s	470	500	g/s	Plasticizing rate (HDPE) ④
Screw speed	rpm	50	42	rpm	Screw speed
OTHERS				OTHERS	
Pump motor power	kW	375	375	kW	Pump motor power
Heating power	kW	290	314	kW	Heating power
Machine dimension (L x W x H)	m	19.33×6.05×5.92	19.83×6.05×5.92	m	Machine dimension (L x W x H)
Machine weight	t	245	252	t	Machine weight
Hopper capacity	kg	600	600	kg	Hopper capacity
Oil tank ⑤	l	3940	3940	l	Oil tank

NOTE:

① with min. mold height / with max. mold height.

② moving platen: 2/3 of max. mold weight.

③ Plasticizing capacity (GPPS): GB standard, with application of GPPS plasticizing capacity of 3-zone screws.

④ Plasticizing capacity (HDPE): Euromap 19, with application of HDPE plasticizing capacity of barrier screws

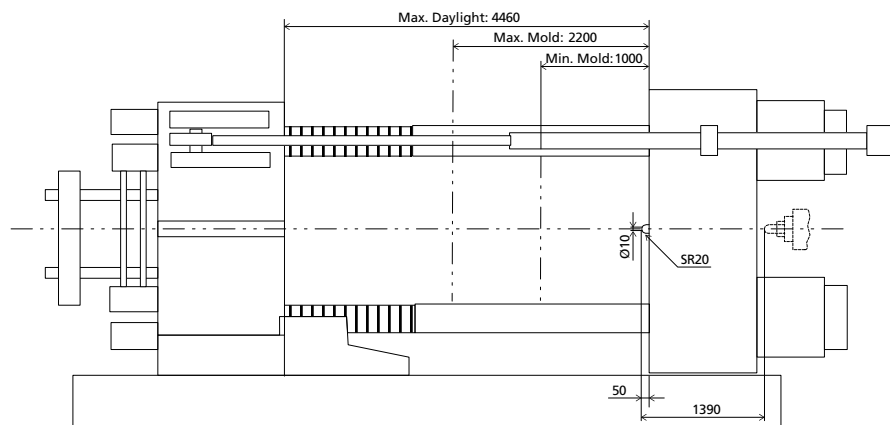
The above plasticizing capacity is for reference only.

⑤ The oil tank volume refers to the volume of the oil tank itself, excluding the volume in cylinder and pipeline. In this sense, the customer is advised to prepare the hydraulic oil according to 1.35 times of the oil tank volume.

We reserve the right to make changes as a result of further technical advantages.

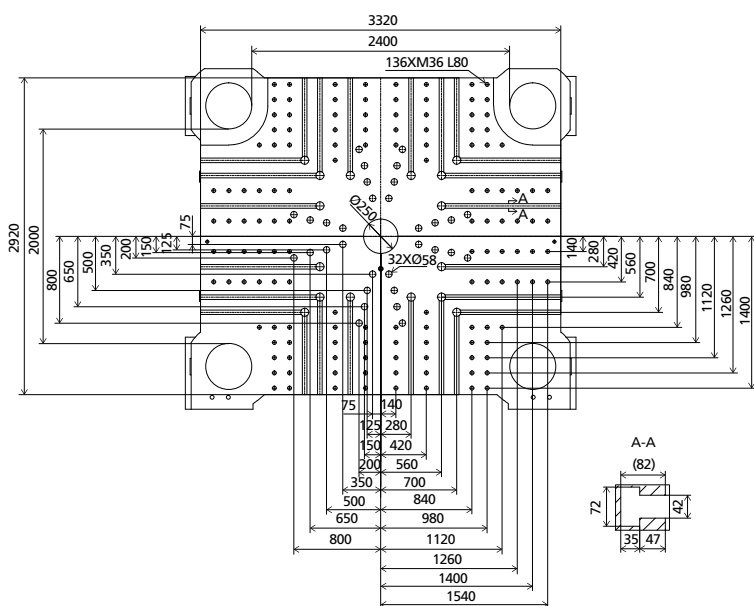
DIMENSIONS JU40000III

Clamping Unit



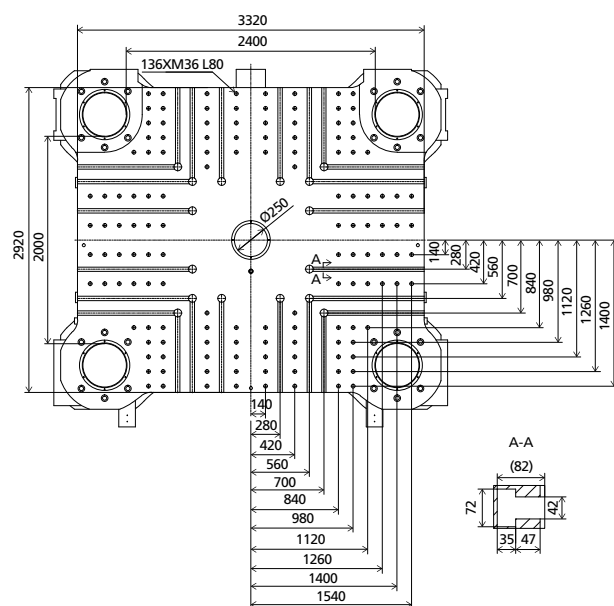
Platen dimensions

Moving platen



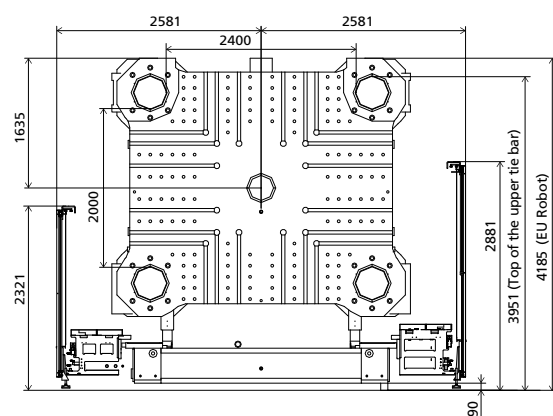
Platen dimensions

Fixed platen



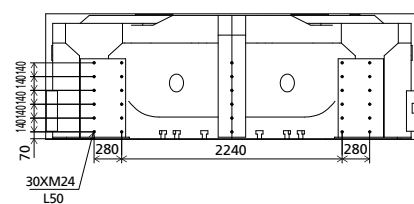
Robot

Mechanical interface

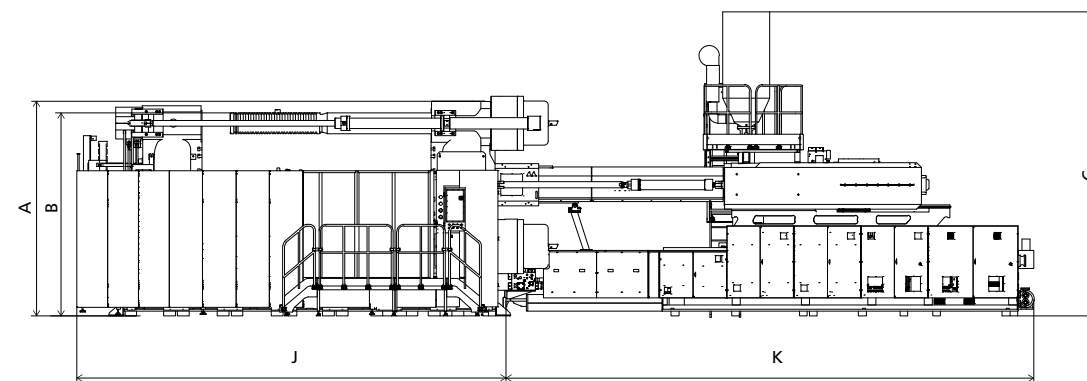


Robot

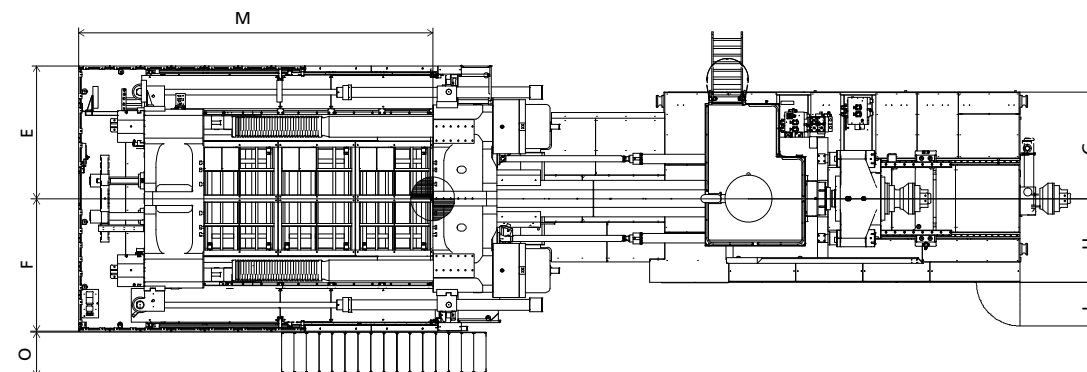
Top view fixed platen



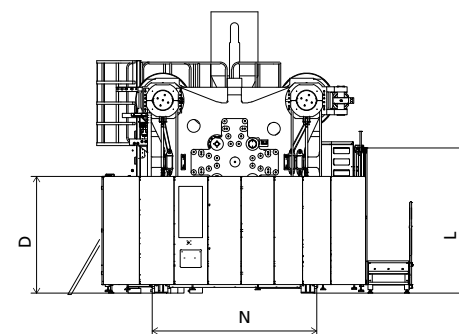
Front view



Top view



Side view



Standard

	A	B	C	D	E	F	G	H	I	J	K	L	M	N	O
93300	4185	3951	5920	2270	2581	2581	2075	1635	850	8360	10288	2830	6900	3200	864
106300	4185	3951	5920	2270	2581	2581	2075	1635	850	8360	10288	2830	6900	3200	864

INJECTION UNIT
DIMENSIONS (mm)

SPECIFICATION JU55000III

SPECIFICATIONS

INJECTION UNIT

		JU55000III			
		93300	106300		
CLAMPING UNIT				CLAMPING UNIT	
Clamping force	kN	55000		kN	Clamping force
Dist. between tie bars (H×V)	mm	2600×2600		mm	Dist. between tie bars (H×V)
Mold height max	mm	2500		mm	Mold height max
Mold height min	mm	1300		mm	Mold height min
Ejector stroke	mm	600		mm	Ejector stroke
Ejector force	kN	800		kN	Ejector force
Max. daylight	mm	6000		mm	Max. daylight
Mold opening stroke ①	mm	3500/4700		mm	Mold opening stroke ①
Max. mold weight ②	t			t	Max. mold weight ②
INJECTION UNIT				INJECTION UNIT	
Screw diameter	mm	240	260	mm	Screw diameter
Screw L /D ratio	L/D	23	23	L/D	Screw L /D ratio
Injection volume (theoretical)	cm ³	60168	80170	cm ³	Injection volume (theoretical)
Injection weight (PS)	g	54753	72955	g	Injection weight (PS)
Injection rate	g/s	2860	3356	g/s	Injection rate
Injection pressure	MPa	141	120	MPa	Injection pressure
Injection pressure (max)	MPa	156	133	MPa	Injection pressure (max)
Plasticizing rate (GPPS) ③	g/s	--	--	g/s	Plasticizing rate (GPPS) ③
Plasticizing rate (HDPE) ④	g/s	470	500	g/s	Plasticizing rate (HDPE) ④
Screw speed	rpm	50	42	rpm	Screw speed
OTHERS				OTHERS	
Pump motor power	kW	375	375	kW	Pump motor power
Heating power	kW	290	314	kW	Heating power
Machine dimension (L x W x H)	m	--	--	m	Machine dimension (L x W x H)
Machine weight	t	390	400	t	Machine weight
Hopper capacity	kg	600	600	kg	Hopper capacity
Oil tank ⑤	l	3940	3940	l	Oil tank

NOTE:

① with min. mold height / with max. mold height.

② moving platen: 2/3 of max. mold weight.

③ Plasticizing capacity (GPPS): GB standard, with application of GPPS plasticizing capacity of 3-zone screws.

④ Plasticizing capacity (HDPE): Euromap 19, with application of HDPE plasticizing capacity of barrier screws

The above plasticizing capacity is for reference only.

⑤ The oil tank volume refers to the volume of the oil tank itself, excluding the volume in cylinder and pipeline. In this sense, the customer is advised to prepare the hydraulic oil according to 1.35 times of the oil tank volume.

We reserve the right to make changes as a result of further technical advantages.

SPECIFICATION JU66000III

SPECIFICATIONS

INJECTION UNIT

JU66000III

518000

CLAMPING UNIT		JU66000III		CLAMPING UNIT	
Clamping force	kN	66000		kN	Clamping force
Dist. between tie bars (H×V)	mm	3200×2600		mm	Dist. between tie bars (H×V)
Mold height max	mm	3500		mm	Mold height max
Mold height min	mm	1500		mm	Mold height min
Ejector stroke	mm	1000		mm	Ejector stroke
Ejector force	kN	810		kN	Ejector force
Max. daylight	mm	6700		mm	Max. daylight
Mold opening stroke ①	mm	3200/5200		mm	Mold opening stroke ①
Max. mold weight ②	t	180		t	Max. mold weight ②
INJECTION UNIT		JU66000III		INJECTION UNIT	
Screw diameter	mm	150		mm	Screw diameter
Screw L /D ratio	L/D	33		L/D	Screw L /D ratio
Injection volume (theoretical)	cm ³	450269		cm ³	Injection volume (theoretical)
Injection weight (PS)	g	328696		g	Injection weight (PS)
Injection rate	g/s	3779		g/s	Injection rate
Injection pressure	MPa	115		MPa	Injection pressure
Injection pressure (max)	MPa	--		MPa	Injection pressure (max)
Plasticizing rate (GPPS) ③	g/s	--		g/s	Plasticizing rate (GPPS) ③
Plasticizing rate (HDPE) ④	g/s	300		g/s	Plasticizing rate (HDPE) ④
Screw speed	rpm	75		rpm	Screw speed
OTHERS		JU66000III		OTHERS	
Pump motor power	kW	525		kW	Pump motor power
Heating power	kW	503.35		kW	Heating power
Machine dimension (L x W x H)	m	25×6.5×7		m	Machine dimension (L x W x H)
Machine weight	t	560		t	Machine weight
Hopper capacity	kg	600		kg	Hopper capacity
Oil tank ⑤	l	7100		l	Oil tank

NOTE:

- ① with min. mold height / with max. mold height.
- ② moving platen: 2/3 of max. mold weight.
- ③ Plasticizing capacity (GPPS): GB standard, with application of GPPS plasticizing capacity of 3-zone screws.
- ④ Plasticizing capacity (HDPE): Euromap 19, with application of HDPE plasticizing capacity of barrier screws
The above plasticizing capacity is for reference only.
- ⑤ The oil tank volume refers to the volume of the oil tank itself, excluding the volume in cylinder and pipeline. In this sense, the customer is advised to prepare the hydraulic oil according to 1.35 times of the oil tank volume.

We reserve the right to make changes as a result of further technical advantages.